

Tlahtolixcopincayotl

Abelardo de la Cruz de la Cruz

Eduardo de la Cruz Cruz

Joanna Maryniak



Tlahtolixcopincayotl

Abelardo de la Cruz de la Cruz
Eduardo de la Cruz Cruz
Joanna Maryniak

Tlahtolixcopincayotl/Abelardo de la Cruz de la Cruz,
Eduardo de la Cruz Cruz, Joanna Maryniak

Amoxmecayotl: © Totlahtol

Amoxmecayopil: © Toconeahuan

Amoxmecayotl tlayacanqueh:
Justyna Olko huan John Sullivan

© Abelardo de la Cruz de la Cruz,
Eduardo de la Cruz Cruz, Joanna Maryniak

© Huei temachtilizcalli Varsovia,
Facultad de “Artes Liberales”

© Zacatlan Macehualtlallamiccan

ISBN: 978-83-63636-55-5
Warszawa 2016

Inin amoxtli motlaxtlauh ica in tomin tlen
oquitemacac Fundacja na Rzecz Nauki
Polskiej tlen Polonia ihtic Programa “Idee dla
Polski” (2013-2016).

In aquin amoxihtic otlapahpah, oquitecpan in
amameh ihuan oquichihchiuh in tlaixpan amatl:
© Joanna Maryniak

In aquin oquipahpah in tlapaltlamantli
ica motenquixtia in amoxmecayotl Totlahtol ihuan
Amoxmecayopil Toconeahuan:
© Martha Elena Ramírez Oropeza

Tlahtolixcopincayotl/Abelardo de la Cruz de la Cruz,
Eduardo de la Cruz Cruz, Joanna Maryniak

Serie editorial: © Totlahtol

Subserie: © Toconeahuan

Editores de la serie:
Justyna Olko y John Sullivan

© Abelardo de la Cruz de la Cruz,
Eduardo de la Cruz Cruz, Joanna Maryniak

© Universidad de Varsovia,
Facultad de “Artes Liberales”

© Instituto de docencia e investigación
etnológica de Zacatecas, A.C.

ISBN: 978-83-63636-55-5
Varsovia 2016

Publicación financiada por la Fundación para la
Ciencia Polaca dentro del Programa “Ideas para
Polonia” (2013-2016).

Ilustraciones, maquetación y diseño de la portada:
© Joanna Maryniak

Logos Totlahtol y Toconeahuan:
© Martha Elena Ramírez Oropeza



Foundation for Polish Science

Amoxmecayotl Totlahtol



Amoxmecayopil Toconeahuan



Tlahtolixcopincayotl

Abelardo de la Cruz de la Cruz
Eduardo de la Cruz Cruz
Joanna Maryniak

Huei Temachtilizcalli Varsovia
Facultad de “Artes Liberales”
Zacatlan Macehualtlallamiccan (IDIEZ)



Tlapannextiliztli

Ni *Tlahtolixcopincayotl* tlen quichihqueh Abelardo de la Cruz de la Cruz, Eduardo de la Cruz Cruz huan Joanna Maryniak quiyoltilia miac yehyectzin tlahtolli huan iixcopinca. Nochi tlahtolli tlen nican mopannextia quitequihuiyayah huan nocca quitequihuiyah miac macehualmeh tlen nemih Chicontepec. Tlahuel techyolpactia pampa tihuelih tiquinmactiliah ni pilamoxtzin conemeh tlen nemih huan momachtiah pan miac altepetzitzin tlen Chicontepec. Miaqueh yehyectzin zaniloah huanya inintotatahhuan, inintatahhuan, ininicnihuan huan inintequixpoyohuan ica nahuatl. Oncah nouhquiya cequinqueh conemeh tlen axtlahuel quimatih zaniloah, zanpampa quinequih momachtizceh.

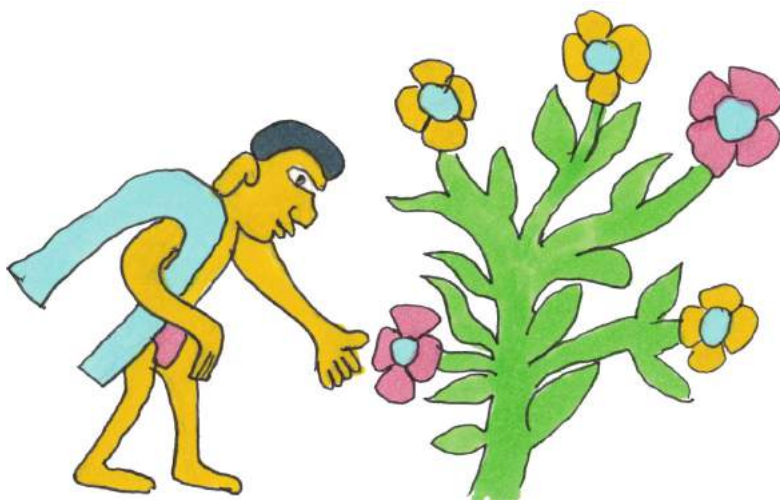
Ticnequih ma yolpaquican conemeh huan inintatahhuan pampa ica ni yehyectzin *Tlahtolixcopincayotl* mohueiliz inintlahtoltlaixmatiliz. Tictlaliah ni *Tlahtolixcopincayotl* quinpalehuiz conetzitzin para ma tlapohuacan ica nahuatl. Quipiya miac tlahtolli tlen huahcauhquiya no quitequihuiyayah tocolhuan, toltecatlacameh, aztecatlacameh huan mexihcatlacameh. Nouhquiya quih-toa queniuhqui eliyayah innemiliz tototatahhuan tlen nemiyayah pan huei altepemeh tlen Teotihuacan, Tollan huan Tenochtitlan. Huan techillia queniuhqui quicencuiliyayah innemiliz macehualmeh quemman itztoyahya caxtillantlacameh.

Nouhquiya tiquihtozceh ce tlahtolli ica tlahcuiloanih. Abelardo euhqui pan Tepoxteco huan Eduardo euhqui pan Lindero 2, nochi ome tlatilantoqueh pan Chicontepepec, Veracruz. Naman nemih pan Zacatecas campa quichihuahqueh ininmaestría ica nahuatlahtolli pan Huei Caltlamachtilyan tlen Zacatecas; tlamachtiah, tlatehtemoah huan quichihuah miac tlamantli tlahtolyoltiliztequitl pan Zacatlan Macehualtlallamiccan (“IDIEZ” Instituto de Docencia e Investigación Etnológica de Zacatecas). Joanna euhqui pan Łódź, Polonia, huan momachtia doctorado pan Huei Caltlamachtilyan tlen Varsovia, Facultad de “Artes Liberales”. Quimati miac tlahtolli tlen Europa huan Asia. Momachtia nahuatlahtolli pan Varsovia huan tlahuel quiamati. Nouhquiya tlahuel quiyolpactia quichihua maixcopincayotl. Nochin eyi tlahcuiloanih tequitih zancecco para ma axcanah ixpolihui, para ma axcanah moilcahua macehualtlahtolli huan macehualtlallamiquliztli ihuahcapanelhuayo.

Justyna Olko huan John Sullivan
Varsoviahpan, pan matlactli huan ome tonatiuh, metztli
tlen honioh, macuiltzontli huan caxtolli huan ce xihuitl.

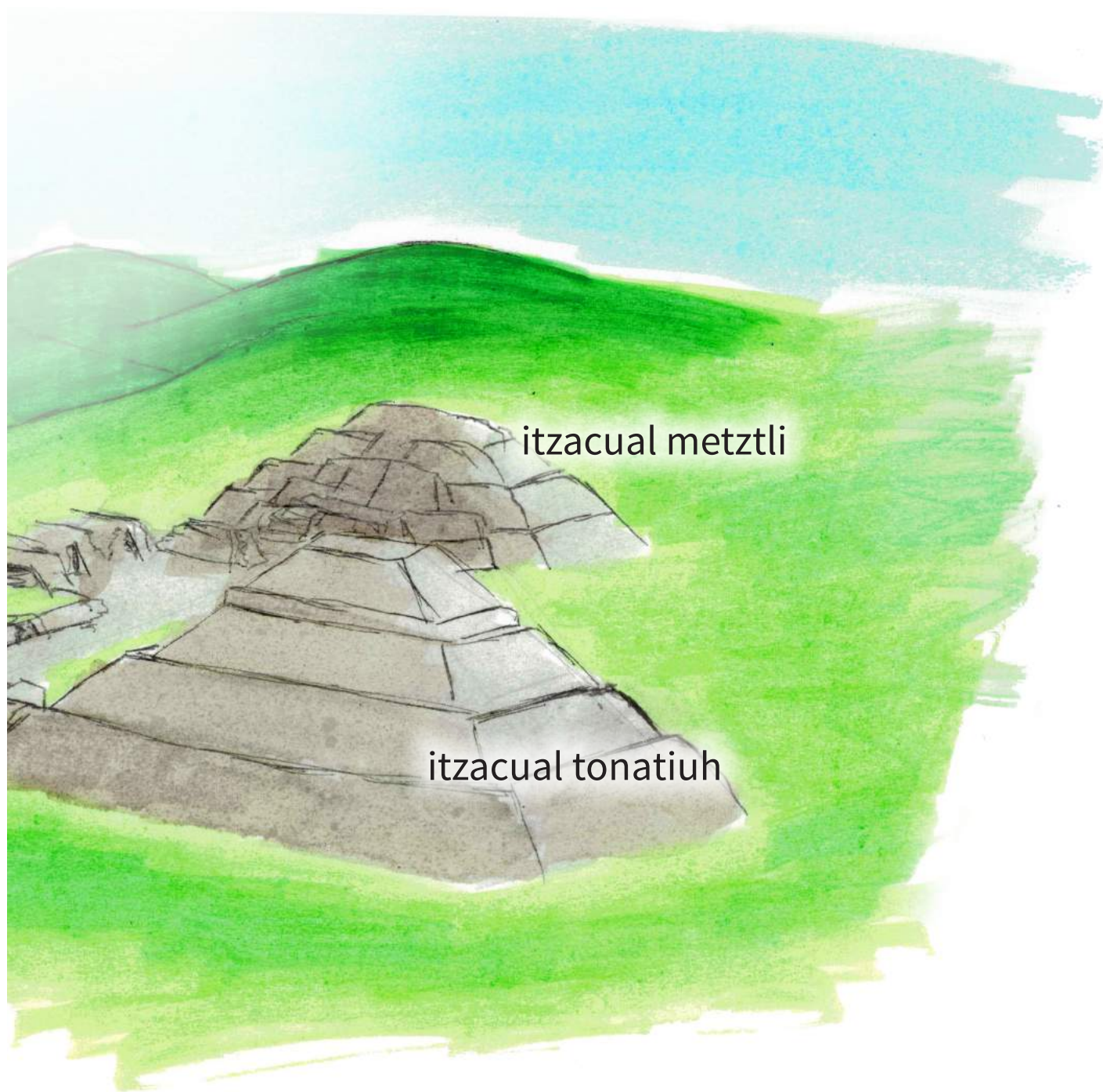
Teotihuacan

Nahuatlacameh ininnemiliz tlen panotihualtoc ipan Mezoamericah tlahuel huahcapatl. Tlaltlahcopan 2000 huan 1500 xihuitl, macehualmeh tlen huei altepetl Teotihuacan zaniloyayah nahuatlahtolli. Nopayoh nemiyayah quipano 120,000 macehualmeh tlen zancampahueli hualayayah. Quichiuhqueh ce huei altepetl, quihueiliyayah inintlalhui huan nouhquiya motlanamaquiyayah ininhuanya nochin macehualmeh tlen nochi Mezoamericah. Tocayotl tlen Teotihuacan techpanoltilihqueh mexihcatlacameh. Ica inihhuantin ticmatih huei ohtli itocah **miccaohtli**, ohtli tlen mictoqueh, huan tzacualli itocah: ce **itzacual tonatiuh** huan ceyoc **itzacual metztli**.



miccaohtli

Teotihuacan



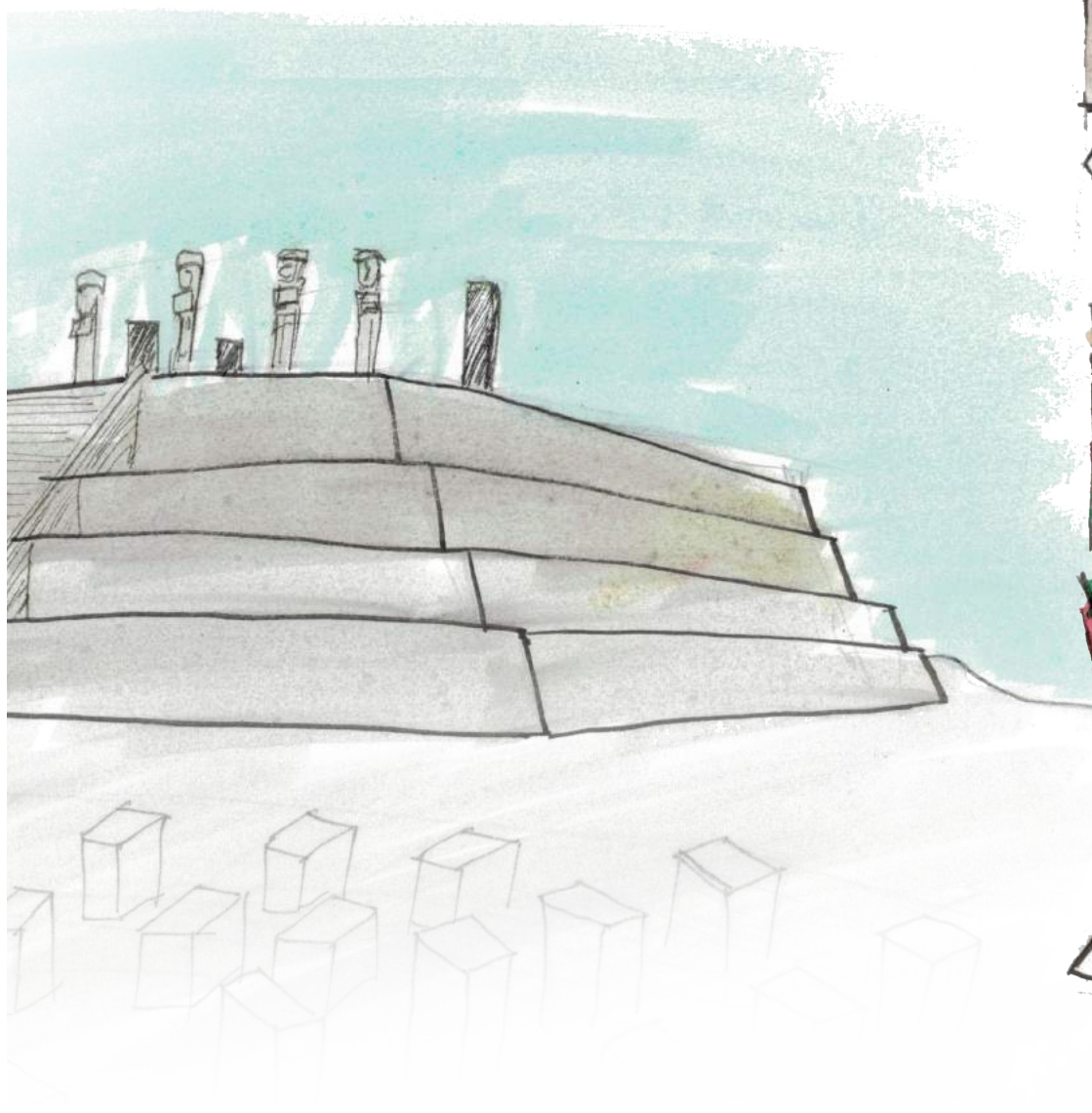
Toltecatlacameh

Toltecatlacameh quichihqueh ce altepetl itocah Tollan, teipan quemman tzontlanqui Teotihuacan ipan hueixihuicahuitl VIII huan IX. Naman hueli moittah calmeh tlen quichihqueh huan motocaxmati **Tula**, ipan Estado de Hidalgo. Nouhquia toltecatlacameh cualli mohuicayayah inihuanya macehualmeh tlen itzonco huan itzintlan tlalli tlen Mezoamericah. Tollan elqui ce huei altepetl pampa ahciyaya itlanahuatil ce cualli achi Mexcotlalli. Ni altepetl quixoleuhqueh huan quitlatihqueh ipan XI hueixihuicahuitl, quemman peuhqueh ahcih tlacameh inintocah chichimecah tlen itzonco Mexco.



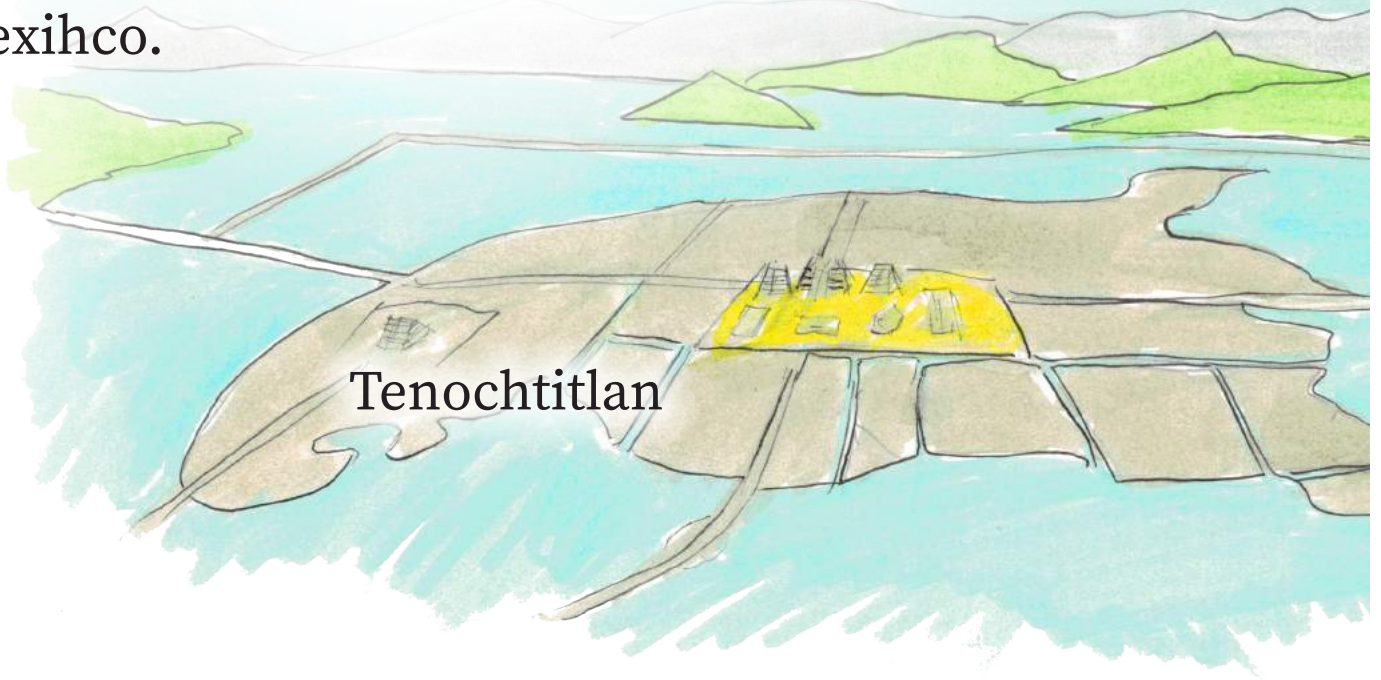
Toltecatlacameh

Tula

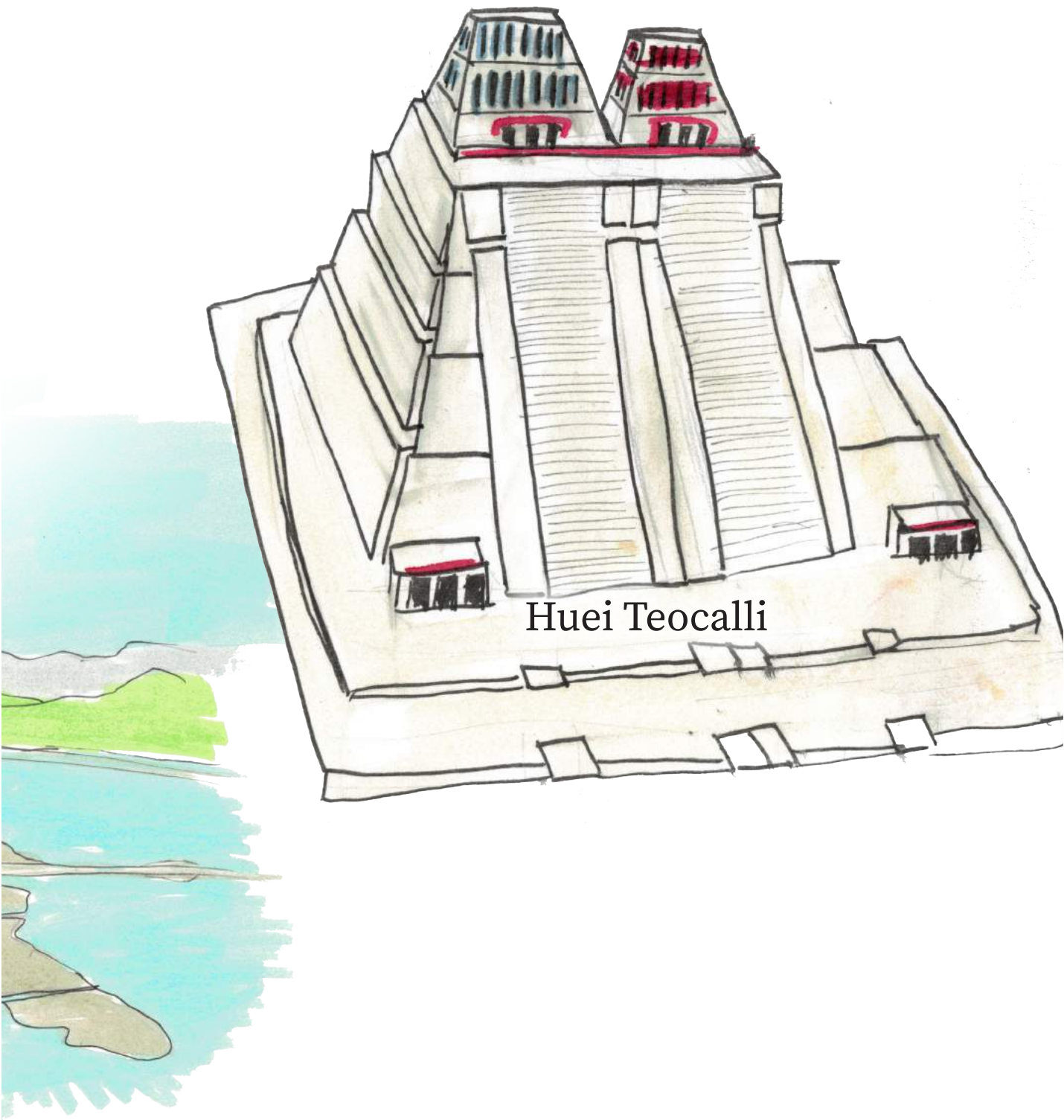


Mexihcatlacameh

Mexihcatlacameh nouhquiya motocaxmatiyayah aztecatlacameh huan zaniloyayah ica nahuatl. Itlatlahcopan 1430 huan 1519 xihuitl, tlanahuatiyayah ce cualli achi Mezoamericah. Motocaxmatiyaya Excan Tlahtoloyan huan tlahuexcan: tlatilanayaya aztah Xoconochco, Mexihco itzintlan. Mexihcatlacameh quipiyayah ininnelhuayo tlen huahcapameh quence toltecatlacameh huan chichimecatlacameh tlen huallayayah itzonco Mexihco. Cequi ininaltepeuh quence **Tenochtitlan**, Texcoco huan Tlahcopan. Ixquizayaya achi maz Tenochtitlan tlen mocahuayaya ipan ce acomolli ipan Texcoco. Nopayoh mocahuayaya **Huei Teocalli**, tlen naman hueli nocca tiquittah ipan Mexihco.



Mexihcatlacameh



Huei Teocalli

Mexihcatlacameh

Mexihcatlacameh tlen tlahuilanayayah moixmatiyayah quence “**ocelotl huan cuauhtli**” noque tlanamacanih, pochtecatlacameh paxaloyayah zancampahueli tlalli huan altepetl tlen Mezo-americanah huan quihuallicayayah huahca miac tlamantli tlen quinamacayayah pan tianquiz tlen **Tlatelolco**. Tlahcuiloanih quicauhteuhqueh miac amoxtli campa tlahcuilohqueh ica inintlahcuilol huan nouhquiya miac tetl ica inincopinca totioztiztin quence **Quetzalcoatl**, **Tlaloc**, Huitzilopochtli, Xiuhteuctli zo Xipehtoteuc.



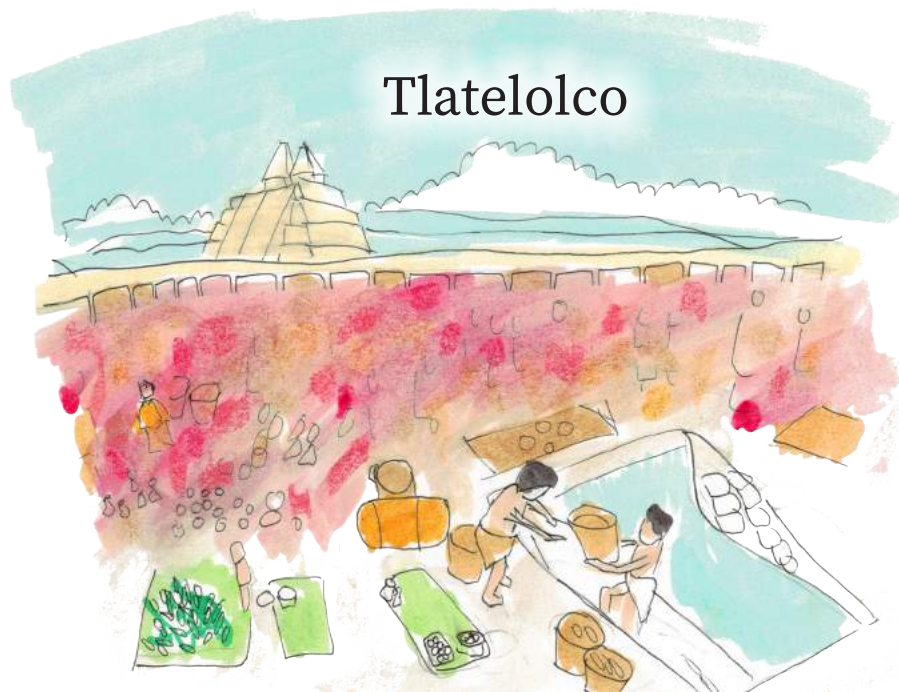
ocelotl huan cuauhtli

Mexihcatlacameh



Quetzalcoatl

Tlaloc



Tlatelolco

Nahuatlacameh tlen Yancuic Caxtillan

Nahuatlallamiccayotl axcanah tlanqui quemman huallahqueh caxtillantlacameh ipan 1519 xihuitl. Ipan 1521 Cortés peuhqui tlanahuatia quemman quitlanqui altepetl Tenochtitlan, meuhcatzan macehualmeh momanahuiyayah chicahuac. Teipan, tlalli tlen aztecatlacameh eliyaya Yancuic Caxtillan, zanpampa nahuamacehualmeh quicencuilihqueh ininnemiliz ipan ininaltepeuh. Quemman peuhqui tlanahuatilli tlen Yancuic Caxtillan, macehualmeh quicencuilihqueh ica inintlanahuatil, queniuhqui tequitiyayah huan queniuhqui quichihuayayah ininnemiliz; nouhquiya hueliyayah quitequihuiah nahuatlahtolli ipan ininaltepeuh, campa quixitlahuayayah cualantli huan tiopan. Ipehuayan xihuitl 1530 ipan XVI hueixi-



Tlaxcallan tlahtoahqueh zaniloah huanya
Hernan Cortes huan Malintzin tlahtolcuapa.

Nahuatlacameh tlen Yancuic Caxtillan

huicahuitl, ni macehualmeh peuhqueh tlahcuiloah ica nahuatl ica tlahcuilolli tlen latin: quichihqueh inincelti huan techcahuilteuhqueh miac tlamantli amatl huan amoxtli tlen naman nocca hueliz ticpohuazceh. Ica hueli ticmatizceh quenuihqui eliyayah tohuahcapatotatahuan, quenuihqui quichihuayayah ininnemiliz, quenuihqui momanahuiyayah huan quenuihqui tlallamiquiyayah. Axoncah cequinoqueh macehualmeh ipan noch America tlen quichiuhteuhqueh miac tlahcuilolli: zan macehualmeh tlen tinahuatih.



*Ninnemiliz yn santo Amalo xiemo caquitiã yni
nemiliz yn santo amalo. ychual ymna hincatza mochi
pan quinmo tlaocolia ya ymmotolinia caychue hincatza
tella ocolitzi yn ampevaltilo ynquali nemiliz yoh yn di pan
vencan nemiliz yoh Au ymmatesalticpac yno quita que
ynthe tlatolli ynqui*

Macehualmeh tlen Chicontepec

Altepetzitzin tlen Chicontepec, ipan itzonco Veracruz, macehualmeh zaniloah nahuatlahtolli. Macehualmeh quichihuah ininnemiliz ininnechca coyomeh huan iuhquinon quicencuiliah tlah-toah huan quitlepanittah huahcapatlallamiquiliztli, quence ipan **tianquiz**, ipan campeca huan ilhuitl. Pipilmeh quinnextiliah tlallamiquiliztli inintatahuan, quence **miltequitl** huan tlanel-toquilli ipan **totiotzitzin** tlen nemih ipan tlaltipactli.

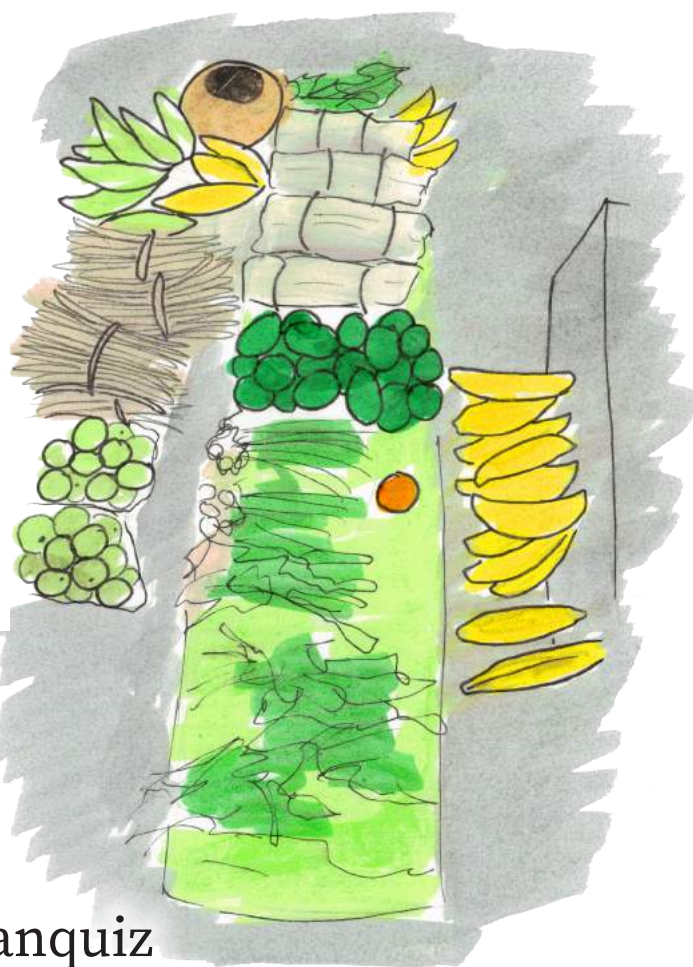


totiotzitzin

Macehualmeh tlen Chicontepec



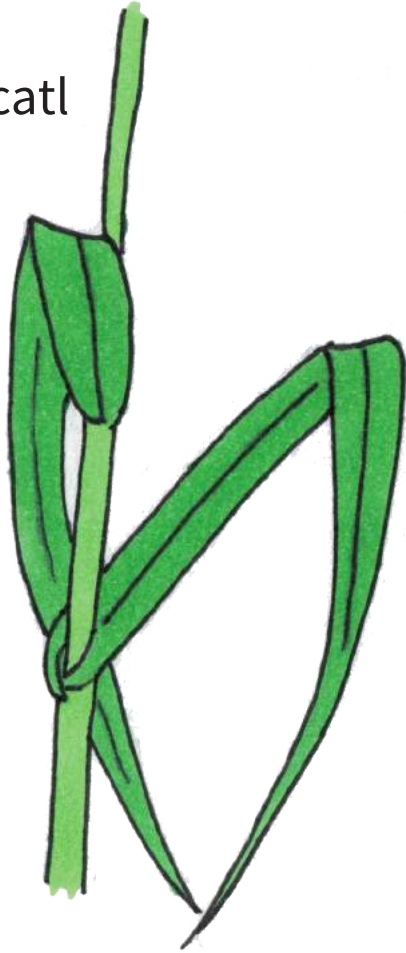
miltequitl



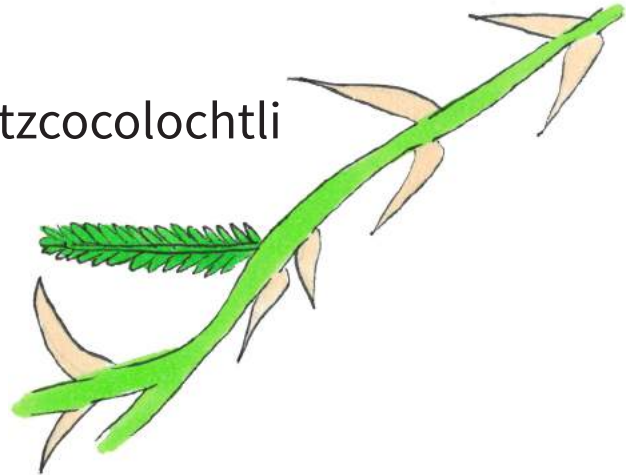
tianquiz

Cuatitlan

acatl



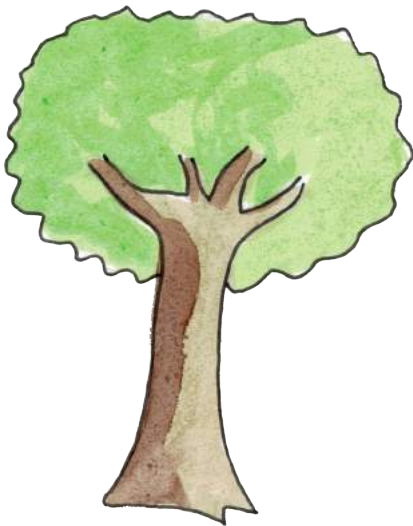
huitzcocolochtli



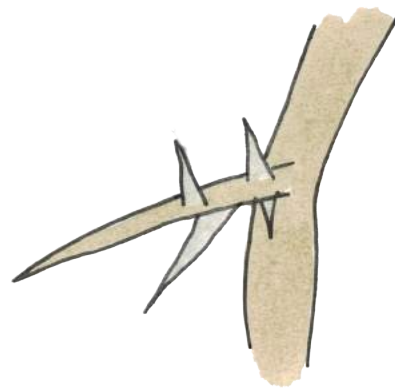
apachtli



cuahuitl



huitztli



Cuatitlan

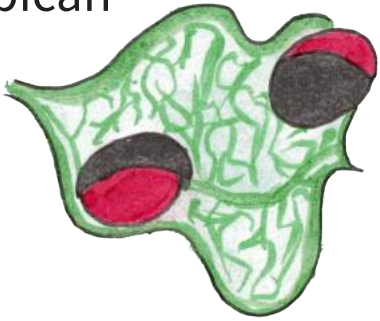
cuamecatl



cuatitlan



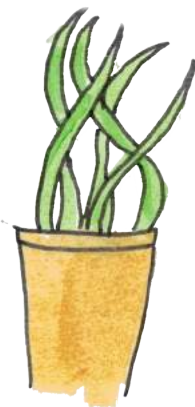
picah



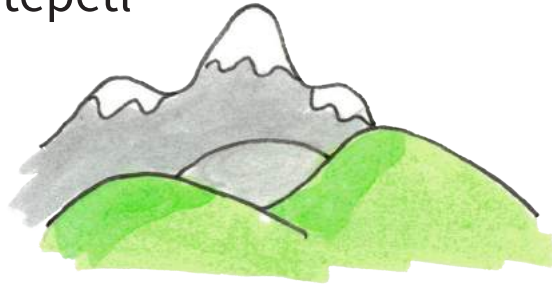
tetl



xihuitl



tepetl

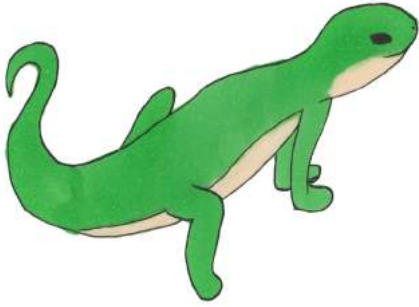


tzitzicaztli



Tecuanimeh

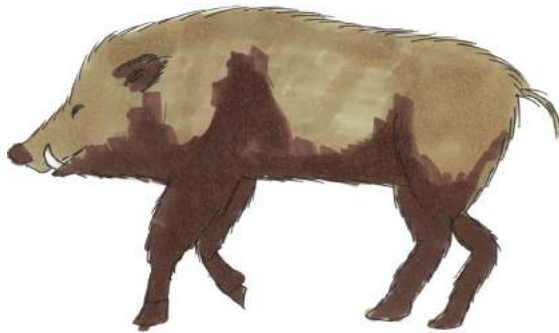
axilin/ topitzin



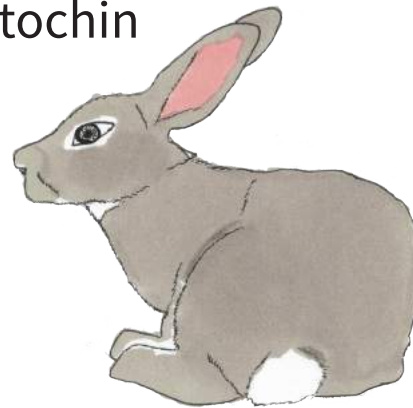
calolo



cuapitzotl

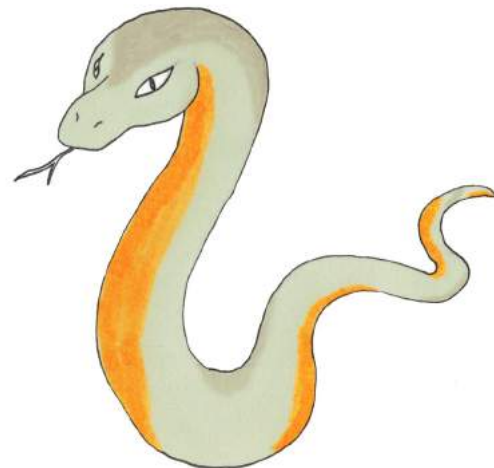


cuatochin



coatl

etzatl



Tecuanimeh

coyochichi



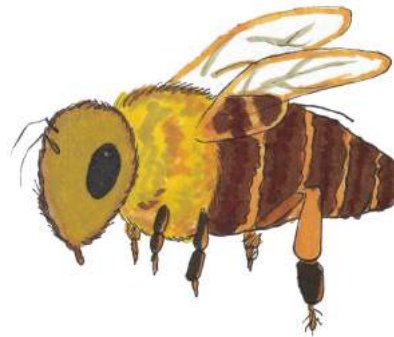
tlacuachin



mapachin



neuctzin



oztotl



zacamiztli



tocomahtli

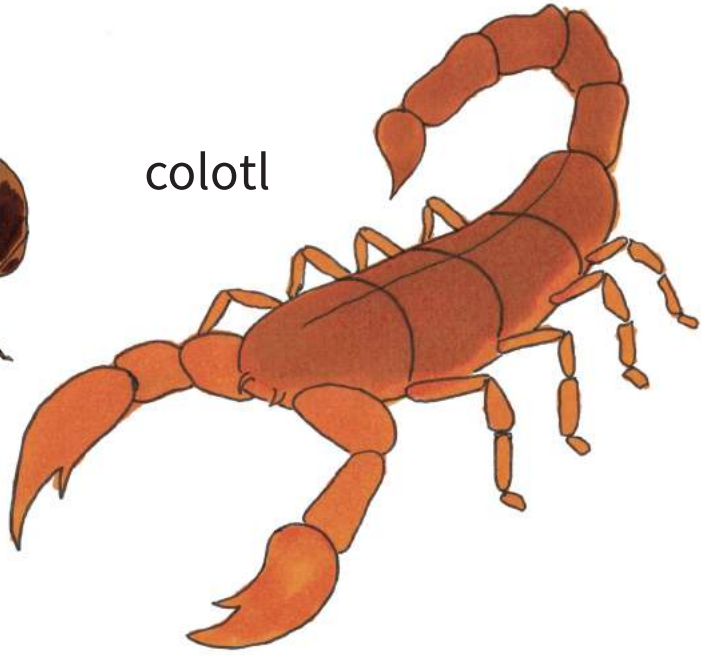


Piltecuanitzitzin

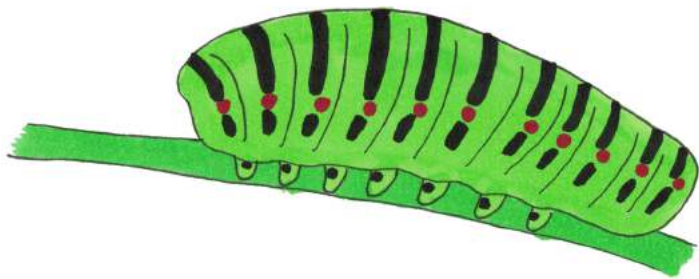
ixcanelin



colotl



ocuilin

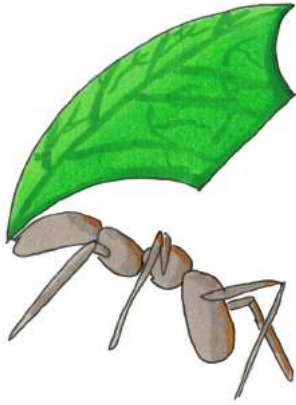


papalotl



Piltecuanitzitzin

tzicatl



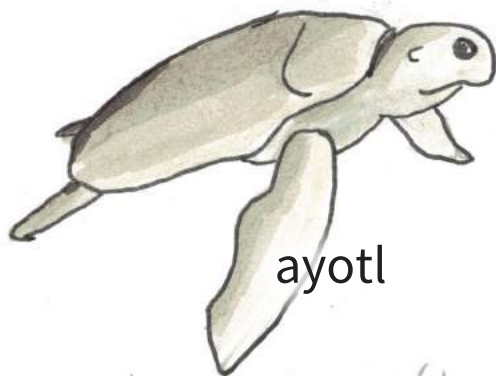
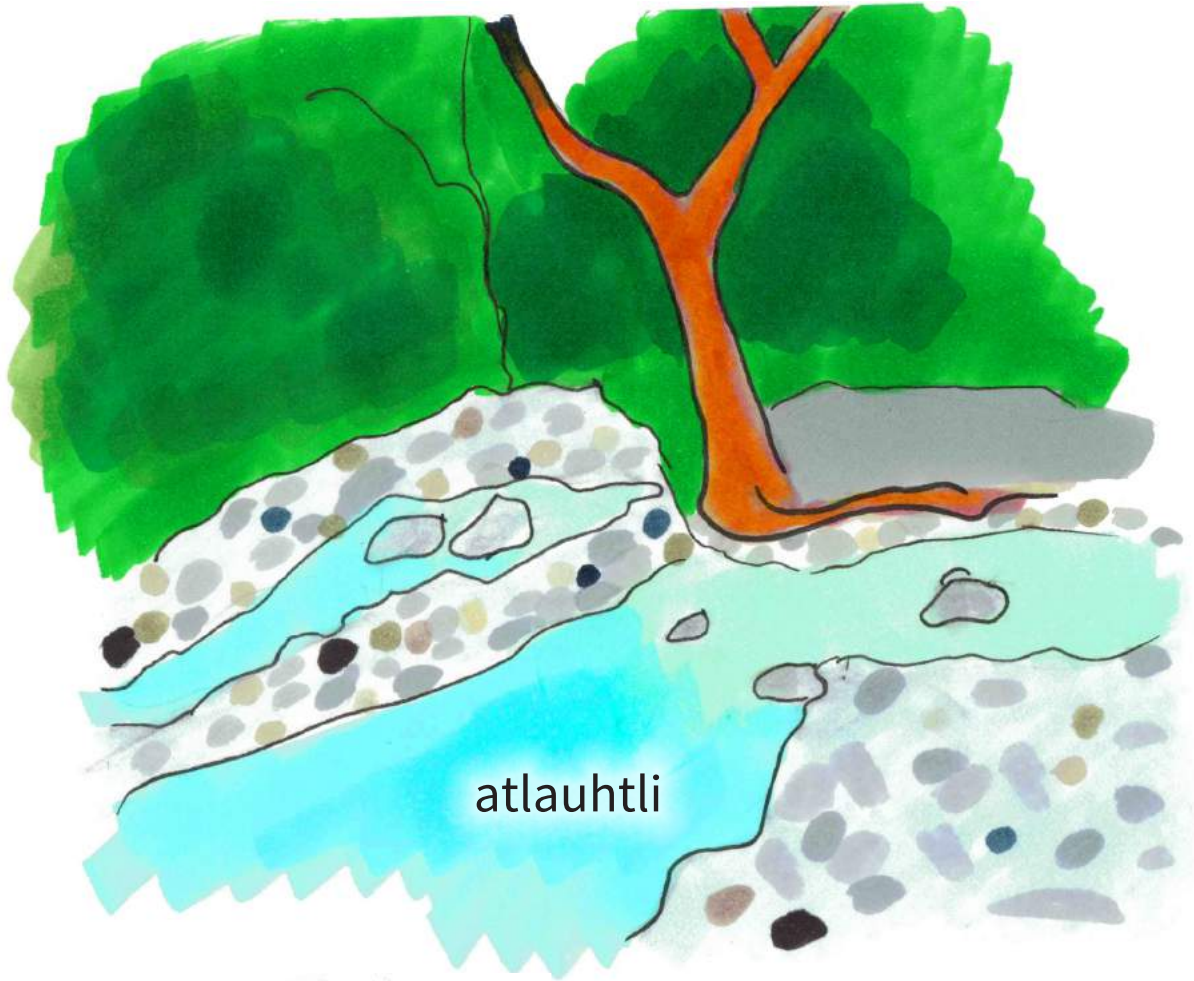
tocatl



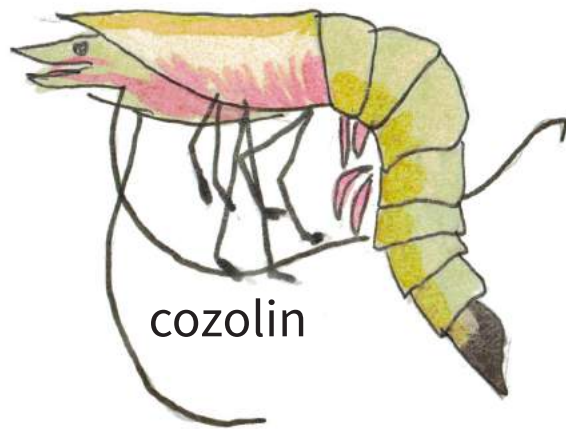
yoltecuacuauhtli



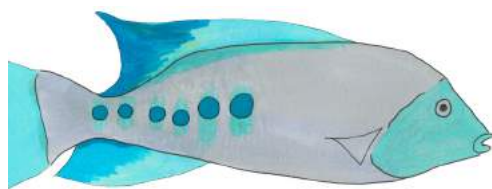
Atlauhtli



ayotl



cozolin

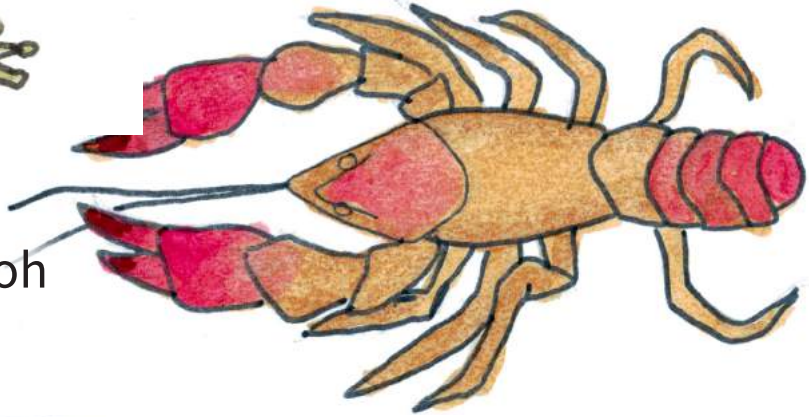


chompeta

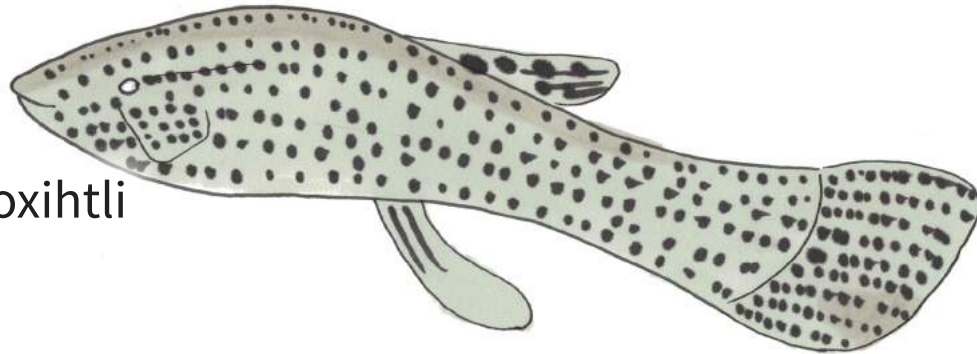
Atlauhtli



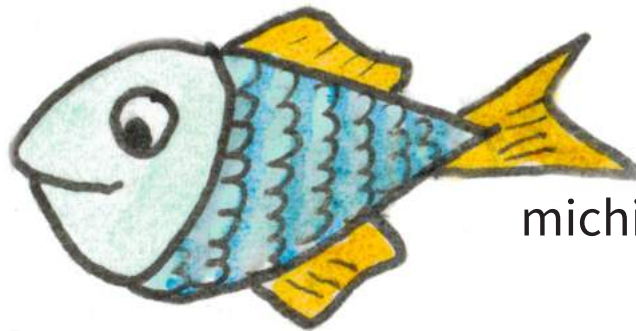
pechpechin



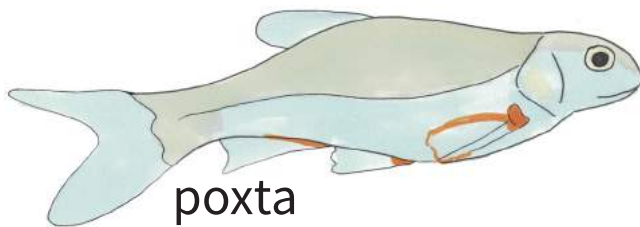
xilin/matacarroh



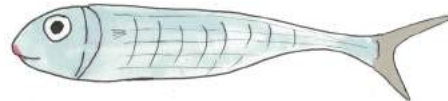
tocoxihtli



michin

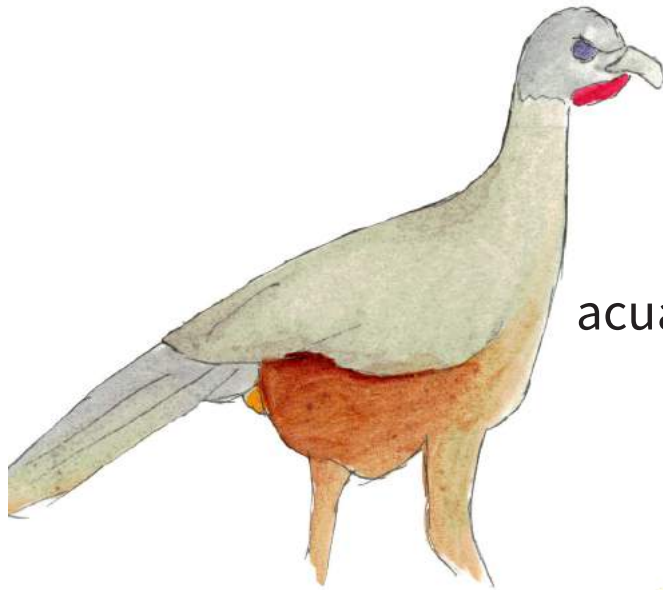


poxta



petlani

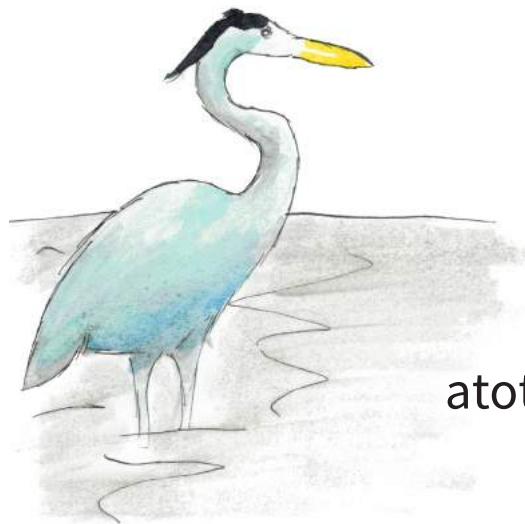
Totomeh



acuatahtli



chiltototl



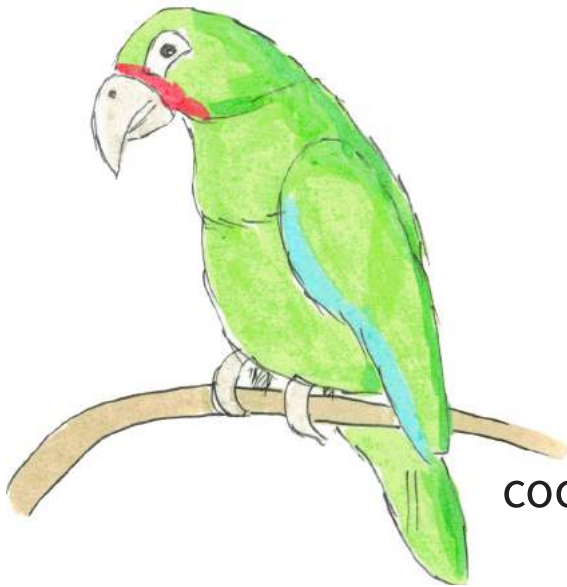
atototl

Totomeh

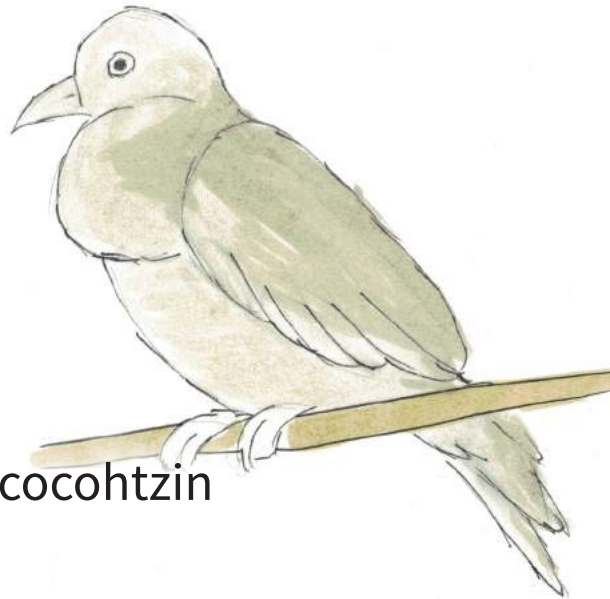
cacalotl



cocho



cocohtzin

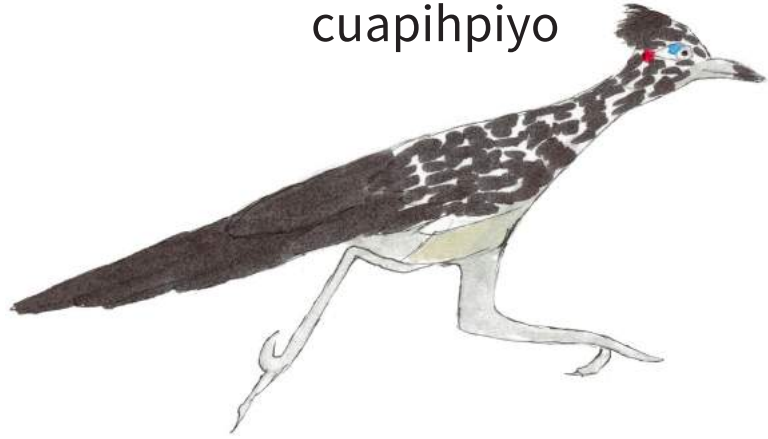


Totomeh

cuachenche



cuapihpiyo



cuamomohtli



cuauhtli

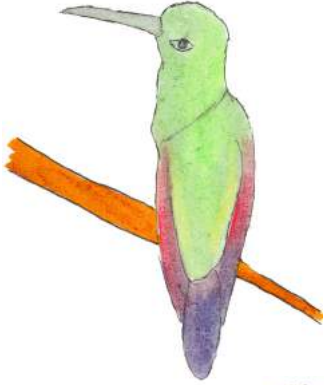


huiliczoh



Totomeh

huitzitzilin



huilotl



quilitzin



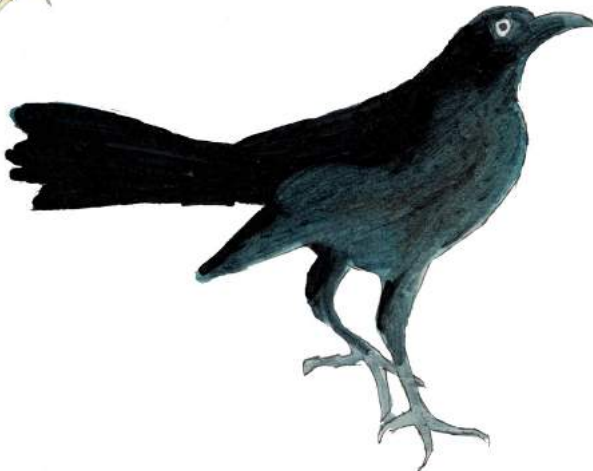
papa



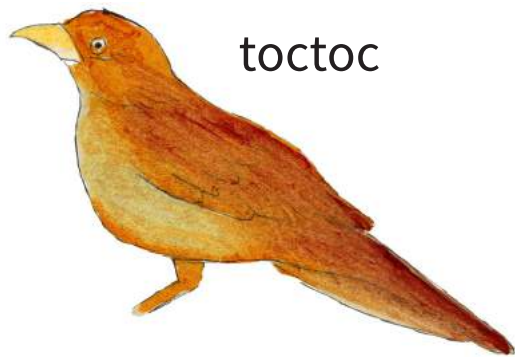
zolin



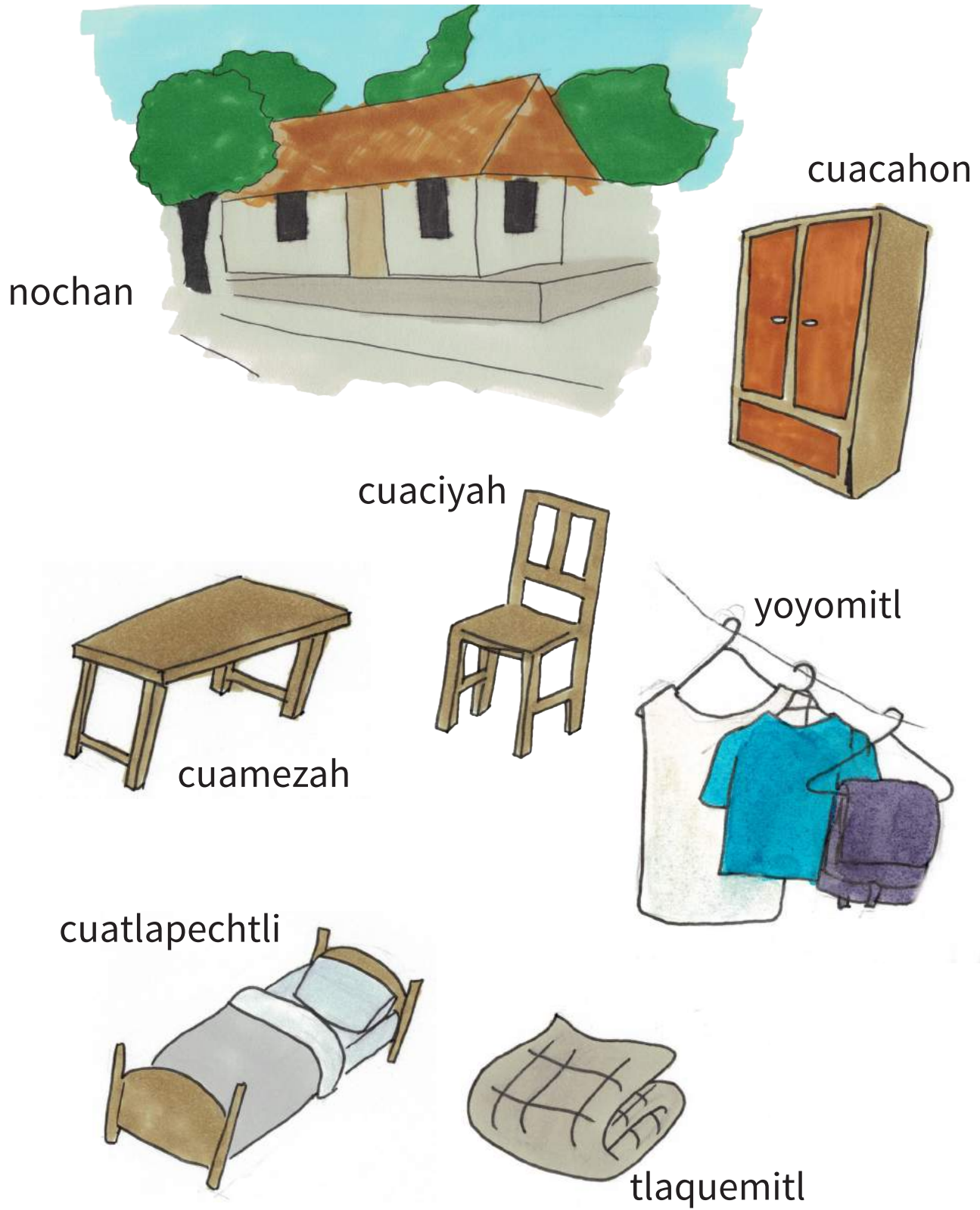
tzana



toctoc

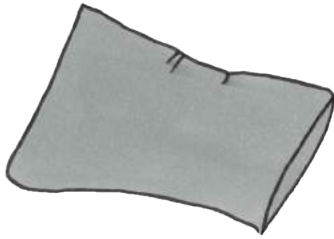


Calihcic



Calihitic

tzontetomitl



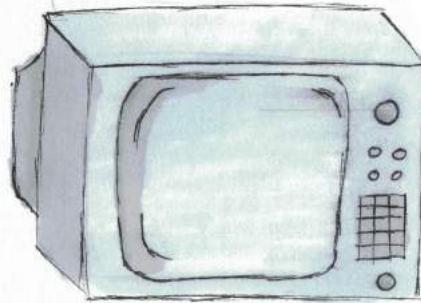
ixcopincayotl



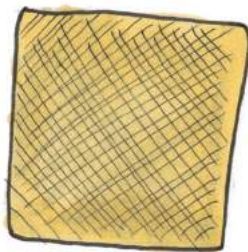
morral



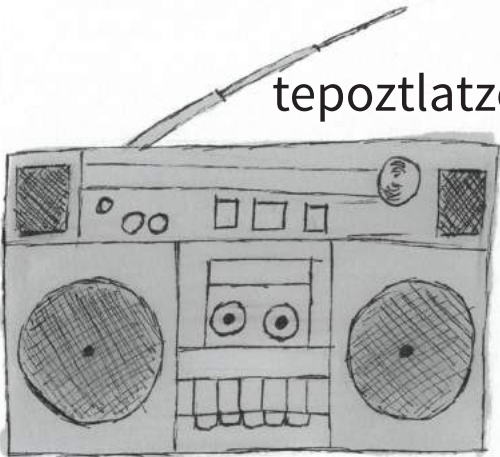
tlamahuizolli



petlatl



tepoztlatzotzontli



tezcatl



Tlaixpan

cantelah



cuachichi

cuachichi

cuachichi



copalli

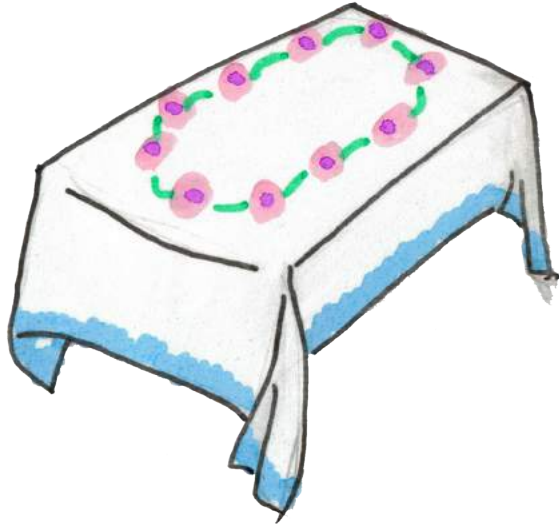
popochcomitl



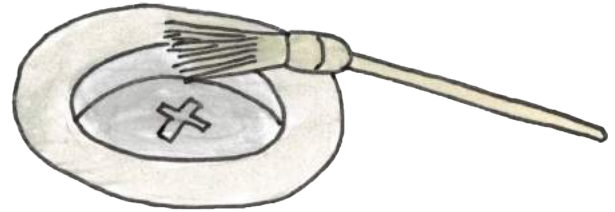
xochimantli

Tlaixpan

tlaxcalyoyomitl



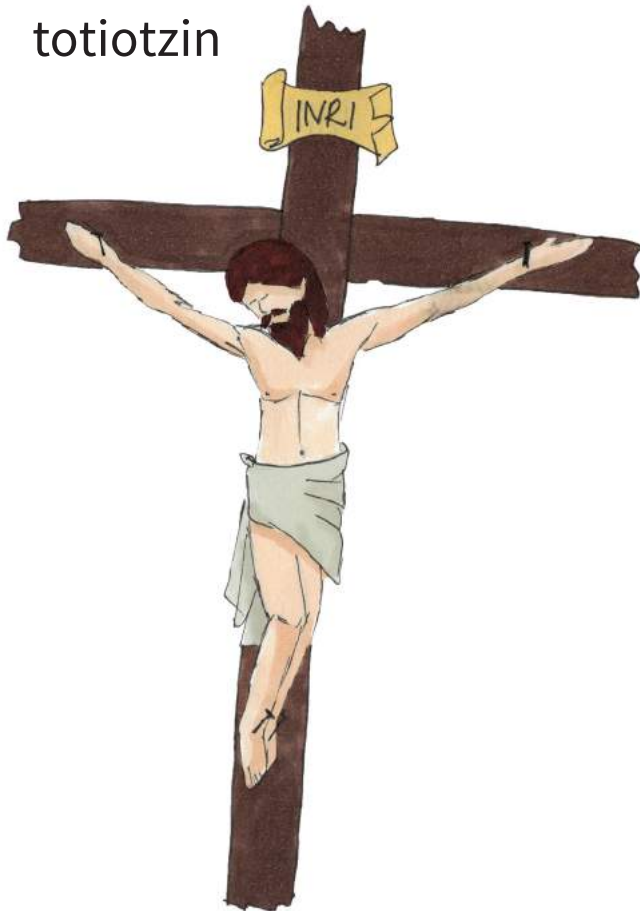
tlatiochihualatl



tonantzin

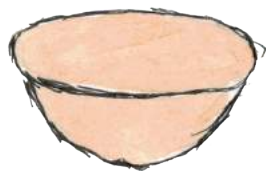


totiotzin



Tlatequihuiliztli tlen ica tlacualchihuah

ahuahcalli



tecuicha

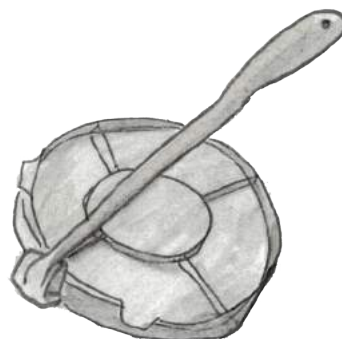


chachapalli

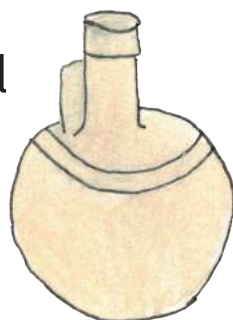


caxitl

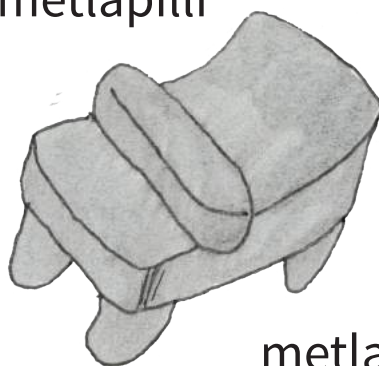
tortiyerah



comitl



memetlapilli

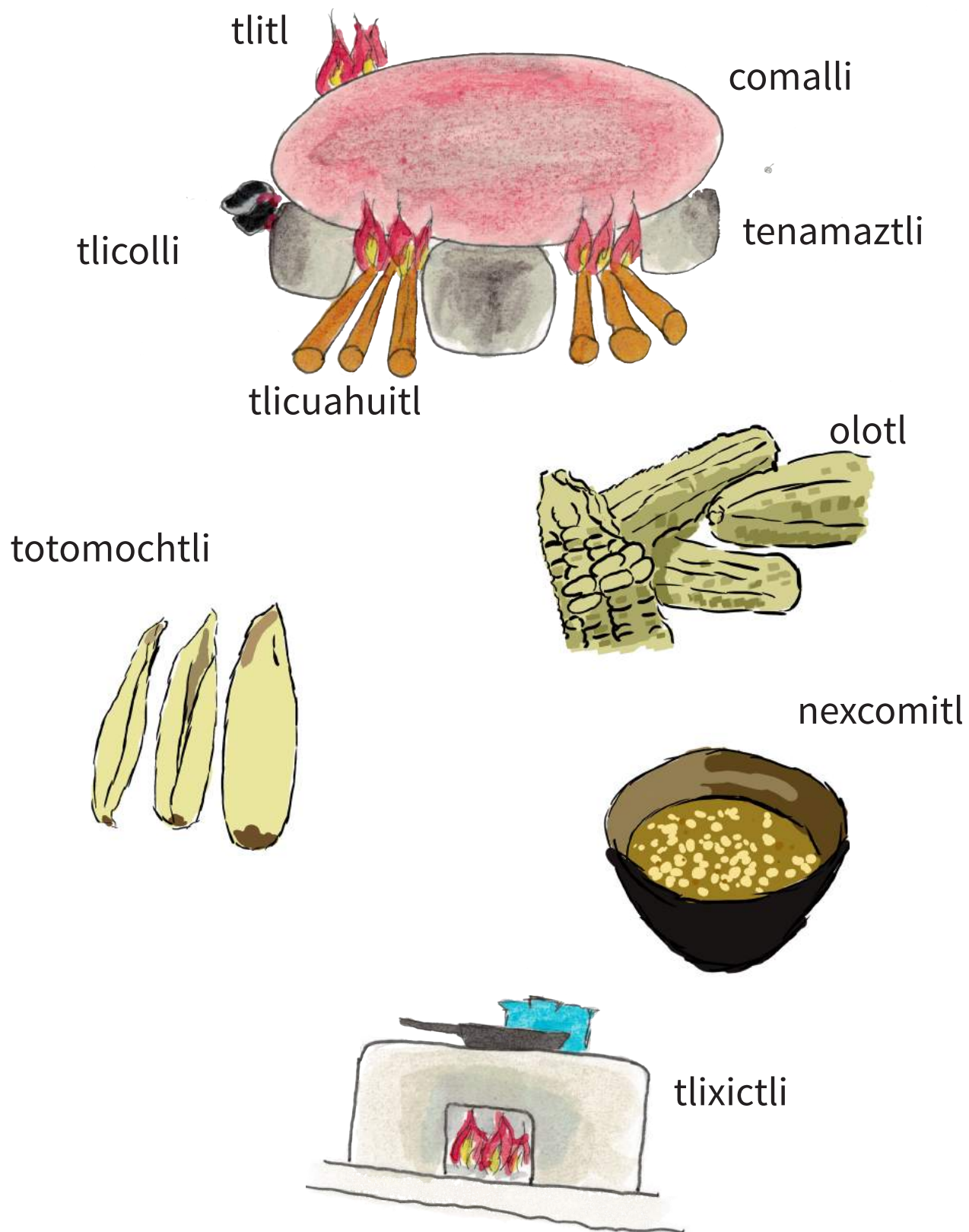


cuaxicalli



metlatl

Tlatequihuiliztli tlen ica tlacualchihuah

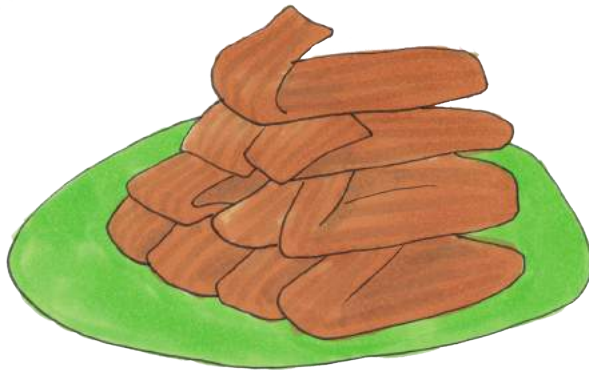


Tlacualiztli

apazoyoh



piquiz

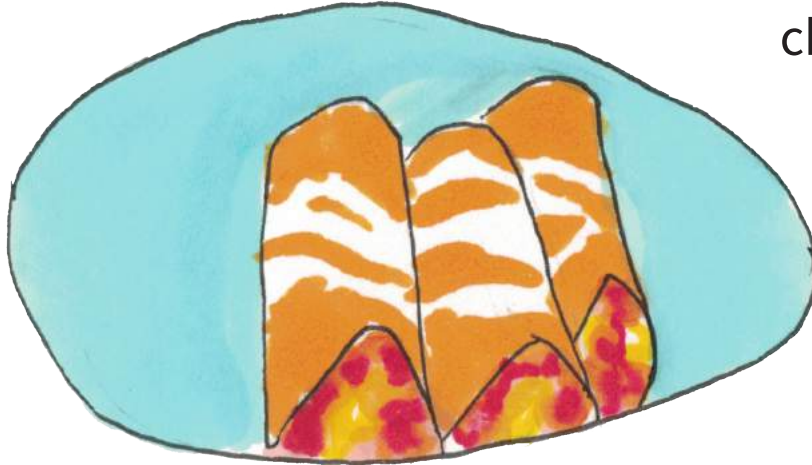


elotlapahuaxtli

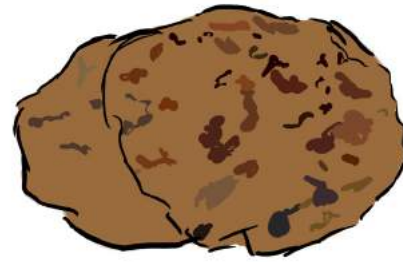


chilmolli

Tlacualiztli



chiltlaxcalli



enel



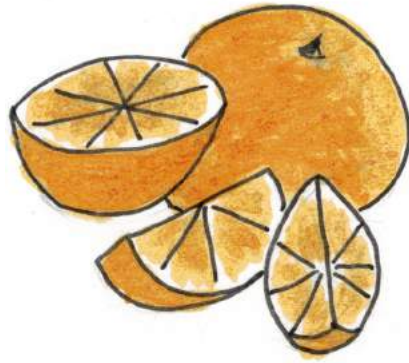
elotlaixquintli



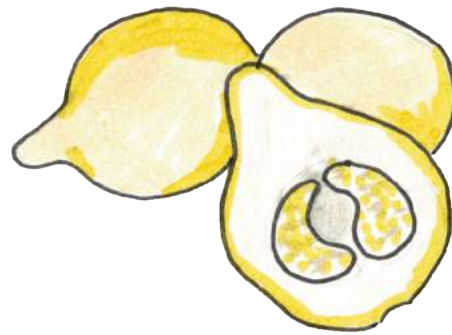
chichiquilli

Tlanempan

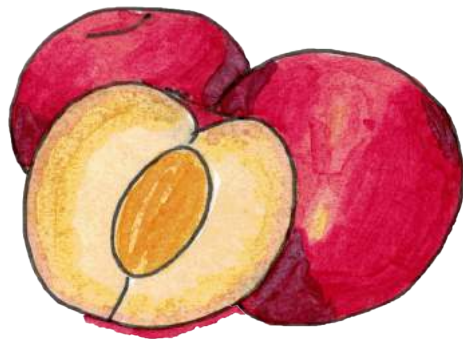
alaxox



chalchocotl

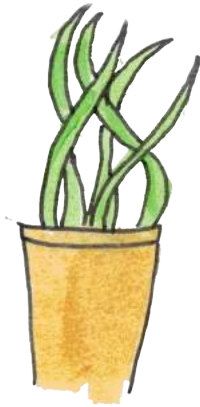


tamaxocotl



Tlanempan

xihuitl



tetl



zacatl



cuatinih



xochitl



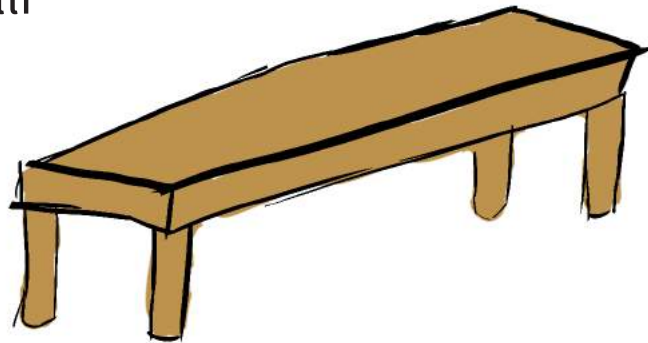
Calmapan

cuachichi



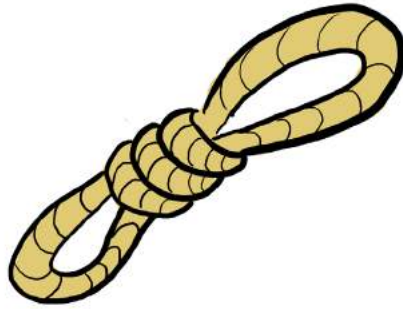
cuachichi

cuahuapalli



Calmapan

mecatl

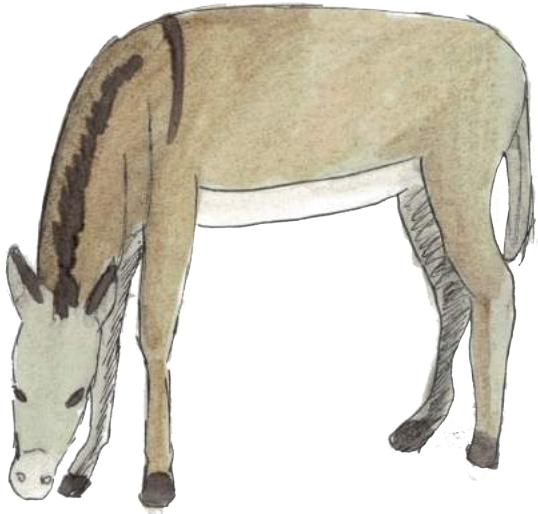


tlachpohuaztli



Tlapiyalmeh

borroh



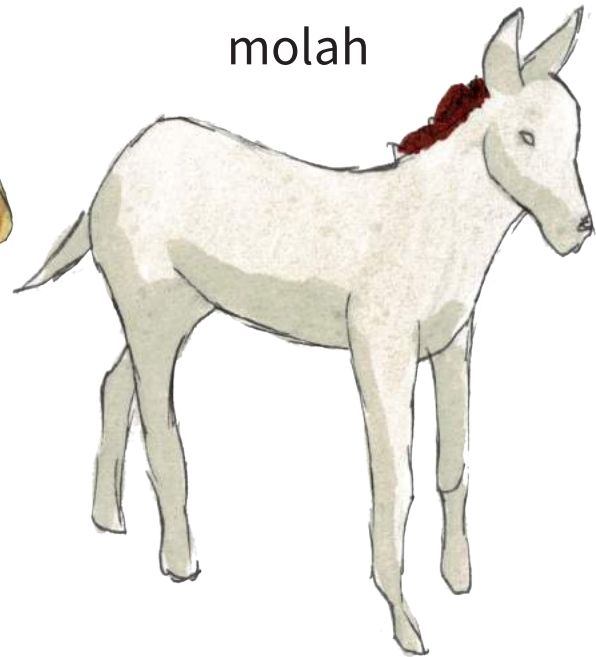
borregoh



cahuayoh

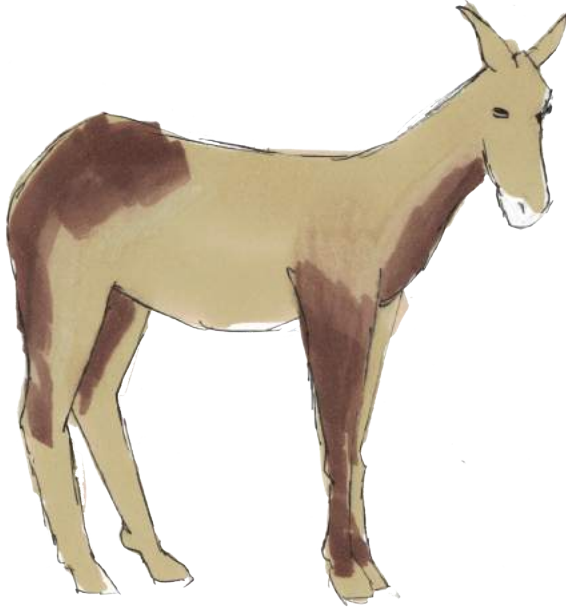


molah

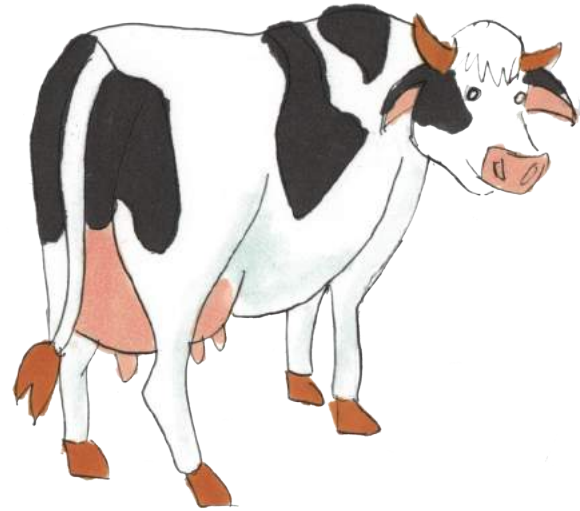


Tlapiyalmeh

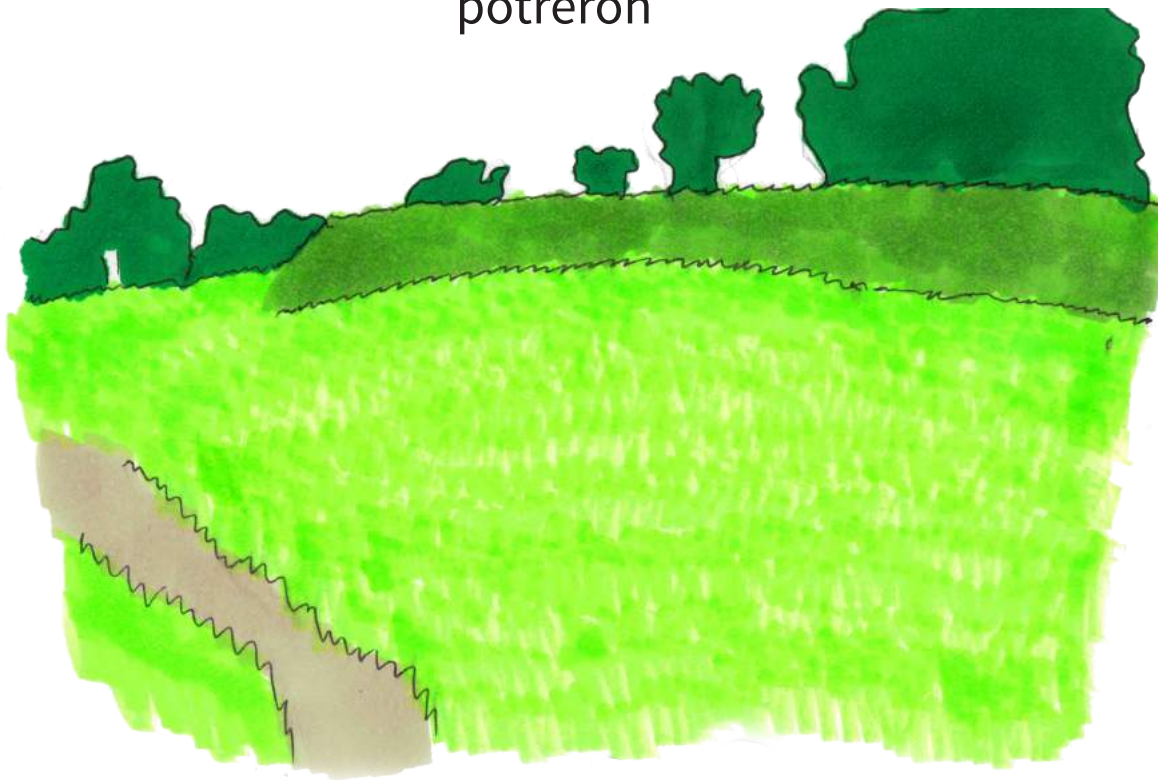
machoh



huacax



potreroh



Tlapiyalmeh tlen caltic

chichi



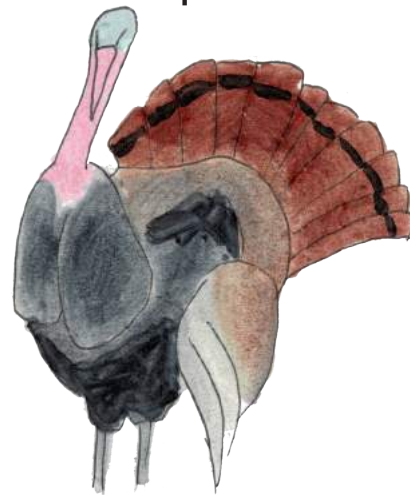
cuapelech



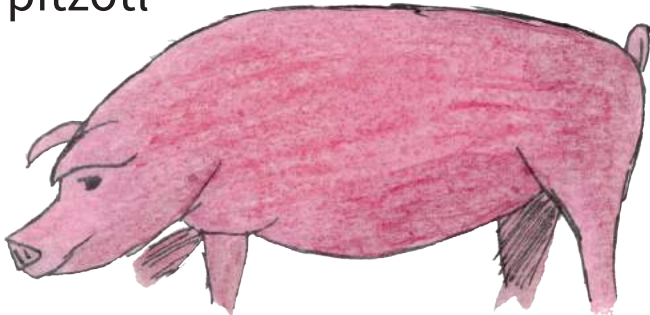
mizton



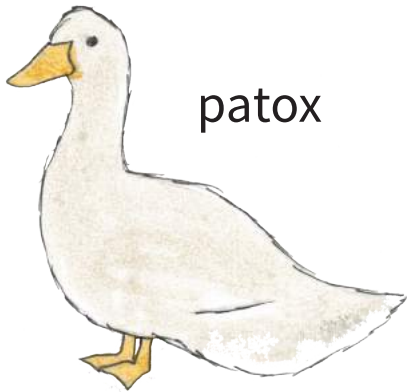
palach



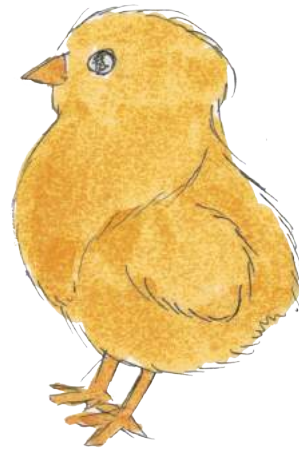
pitzotl



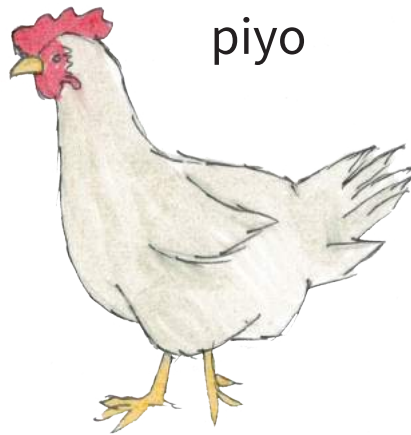
Tlapiyalmeh tlen caltic



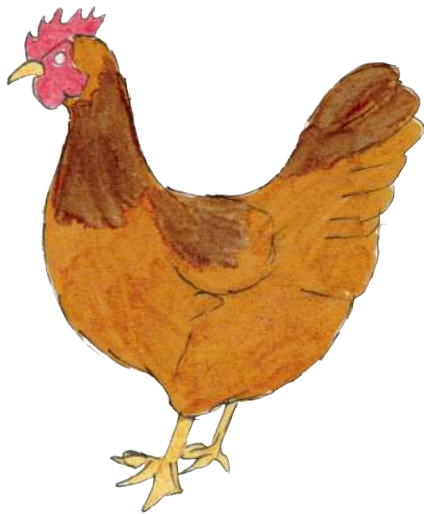
patox



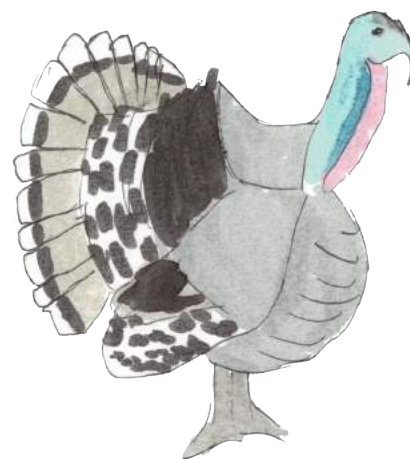
pilpiyotzin



piyo

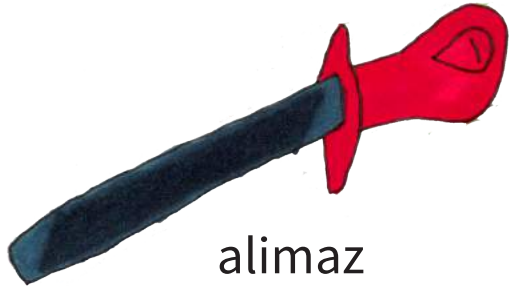


tenanpiyo



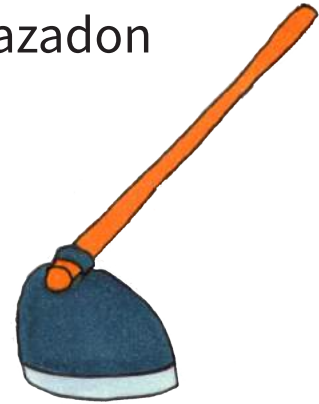
totolin

Millah

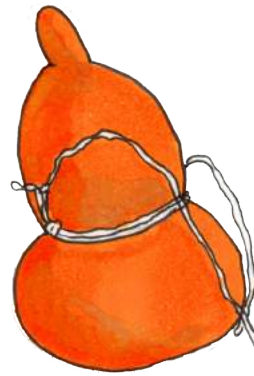


alimaz

azadon



cuachiquihuitl



tzicatl



macheteh



bombah



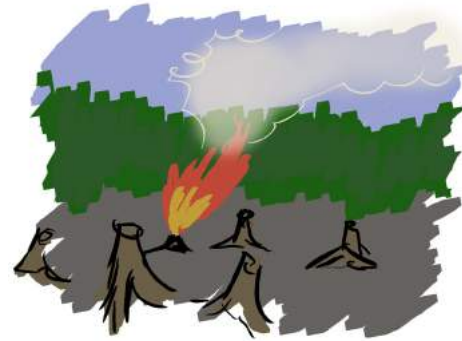
cuatlatoctli

Millah

tlayi



tlachinoa



tlamehua

toquiztli



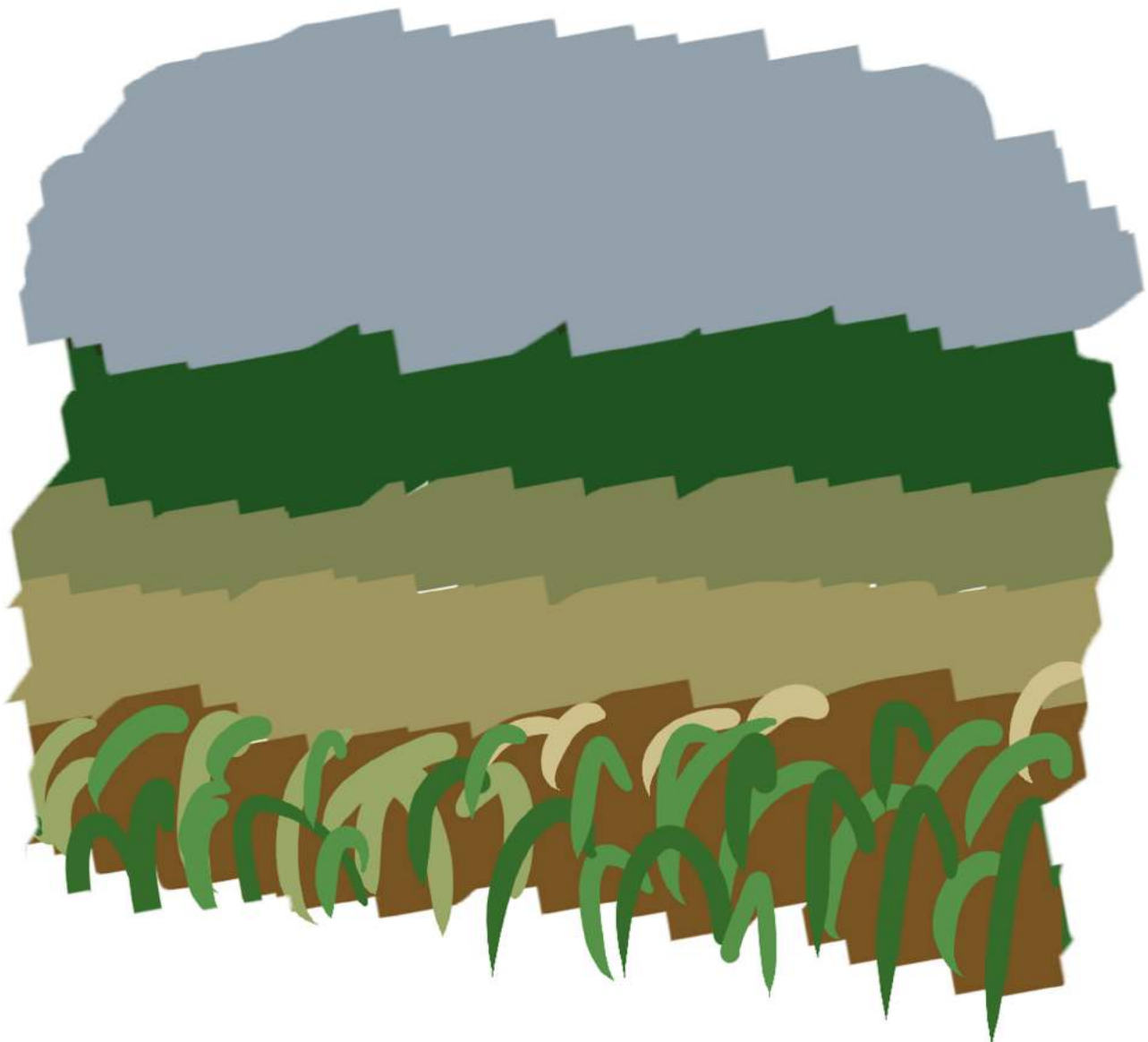
pixca



cinzaca

Cintli ipohual

xopanmilli

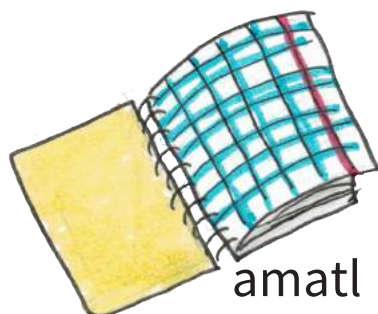


Cintli ipohual

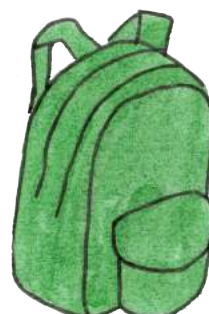


tonalmilli

Tlatequihuiliztli tlen caltlamachtloyan



amatl



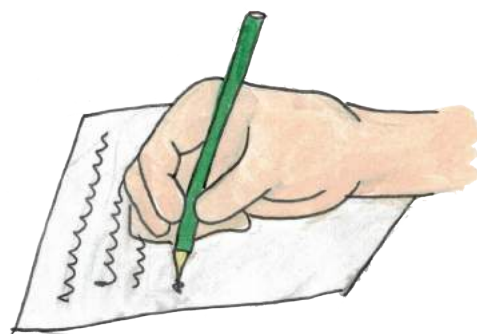
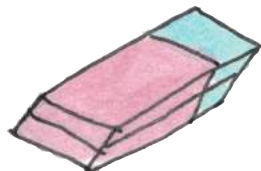
amochmorral

amochtli



chantequitl

cuapohpohua



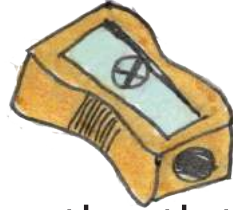
tlahcuiloliztli



tequihuiliztli

Tlatequihuiliztli tlen caltlamachtiloyan

tlapohualiztli



tlen tlatentia

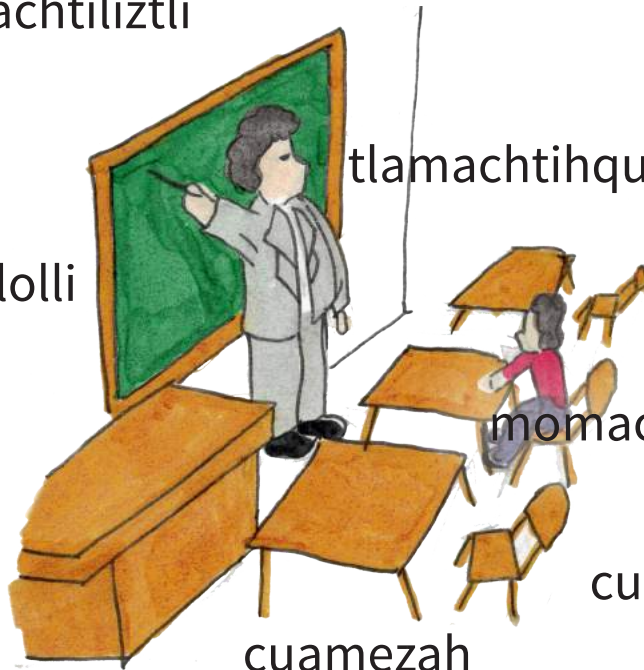
mahuiltiliztli



tlicolli

tlamachtiliztli

huapaltlahcuilolli



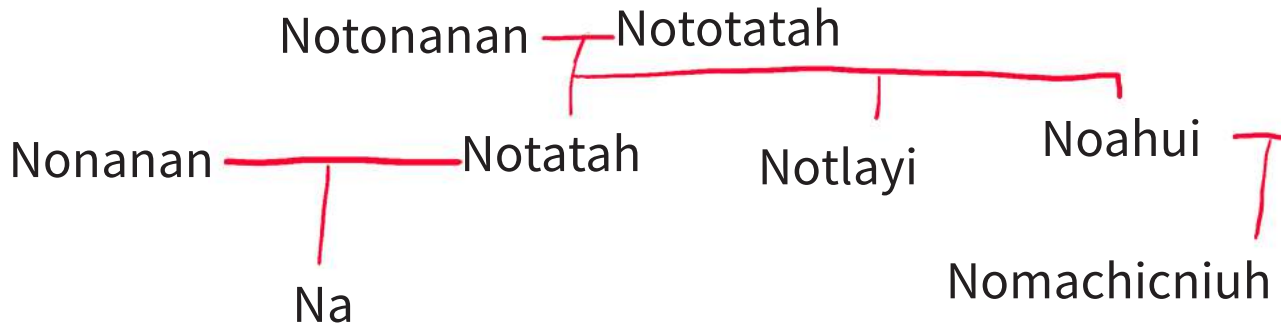
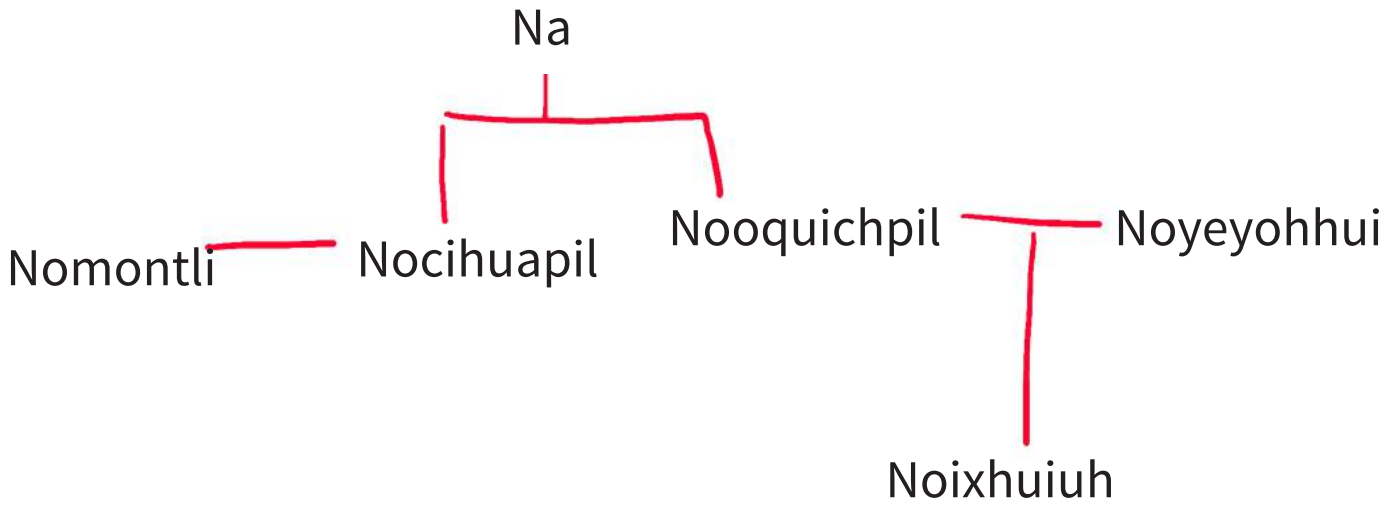
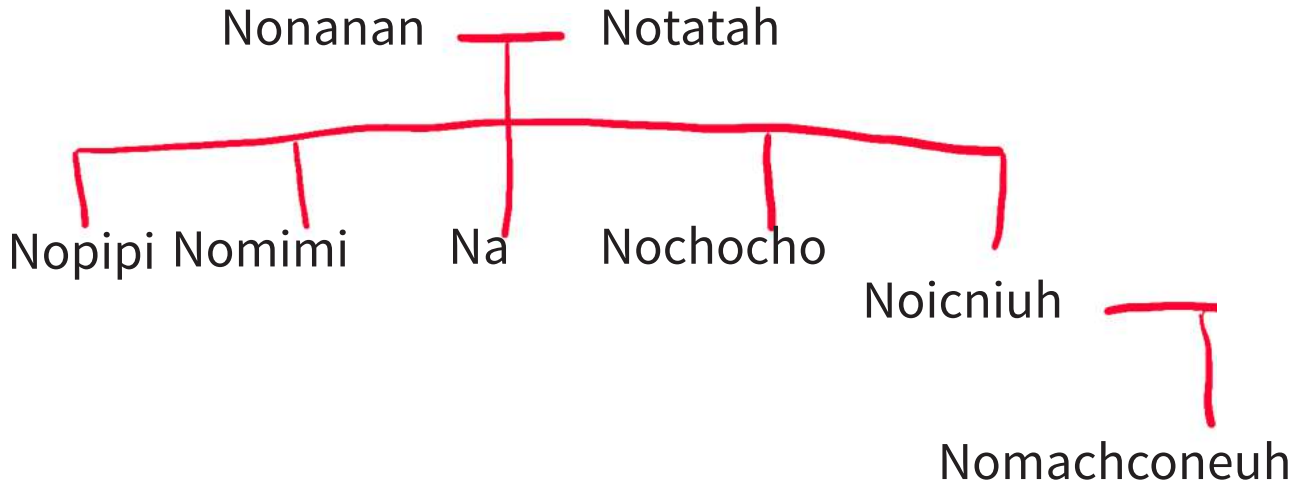
tlamachtihqetl

momachtihqetl

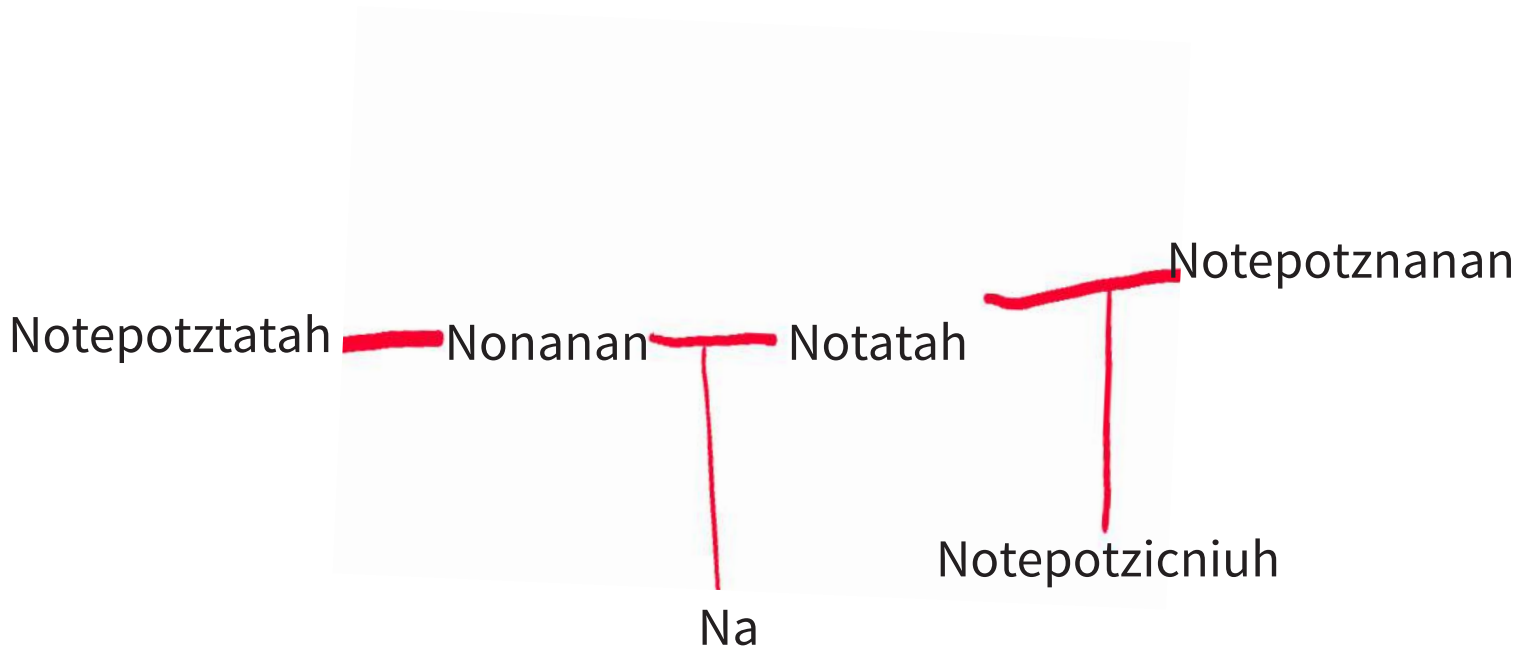
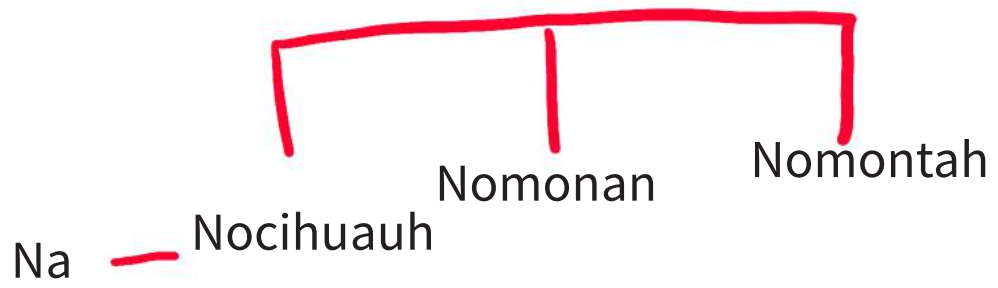
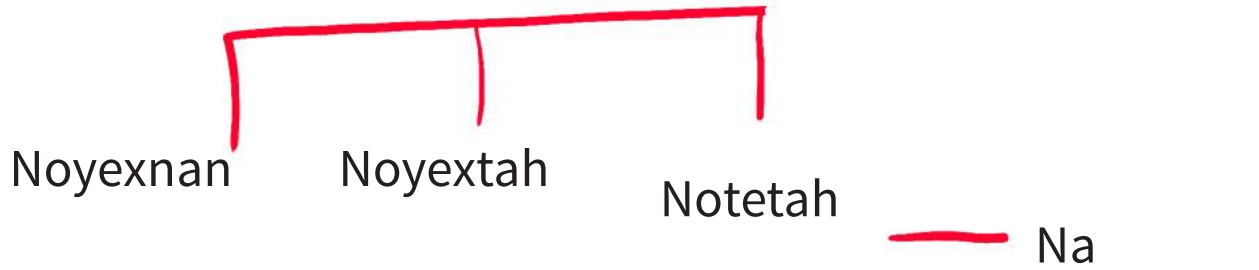
cuaciyah

cuamezah

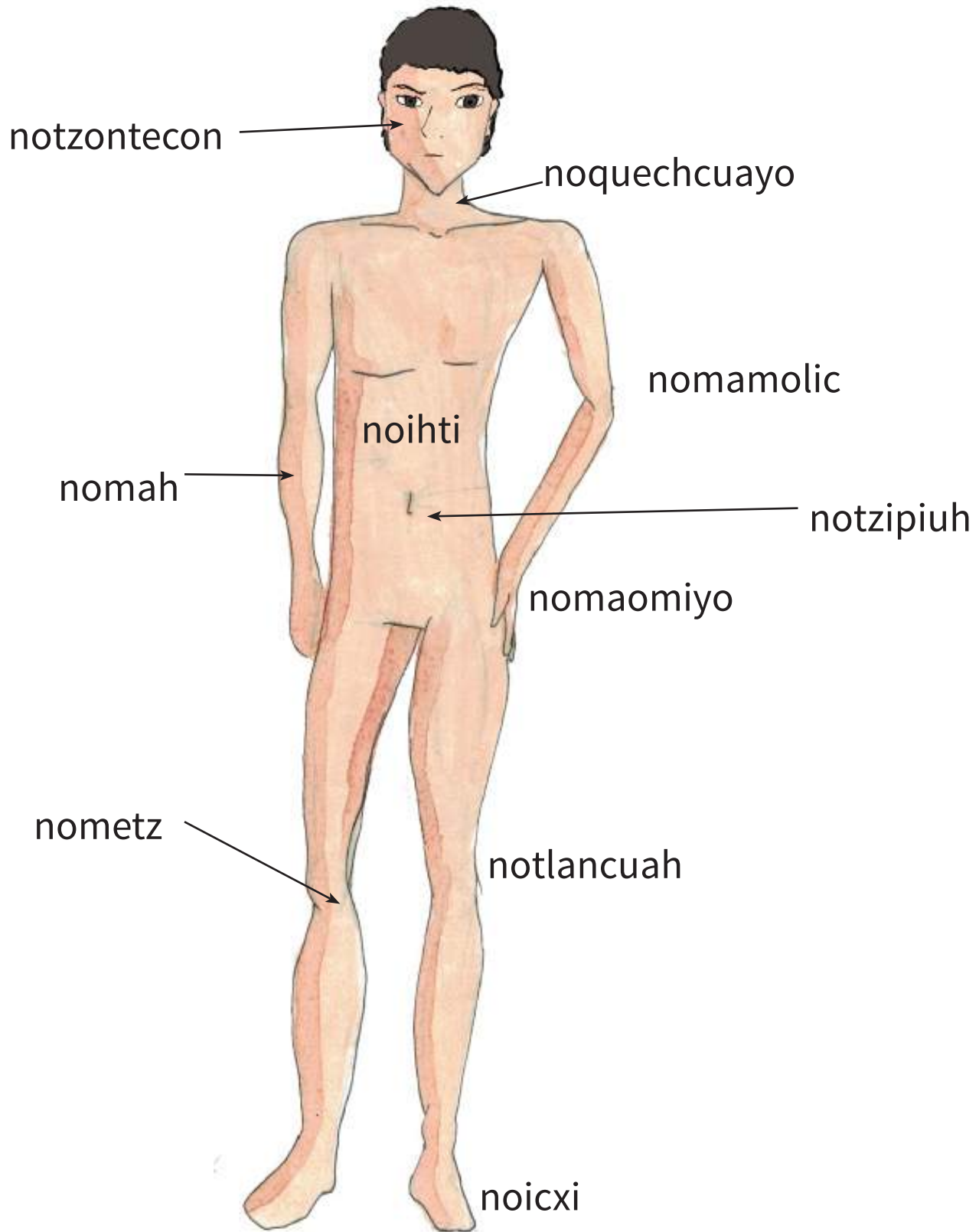
Toteixmatcahuan



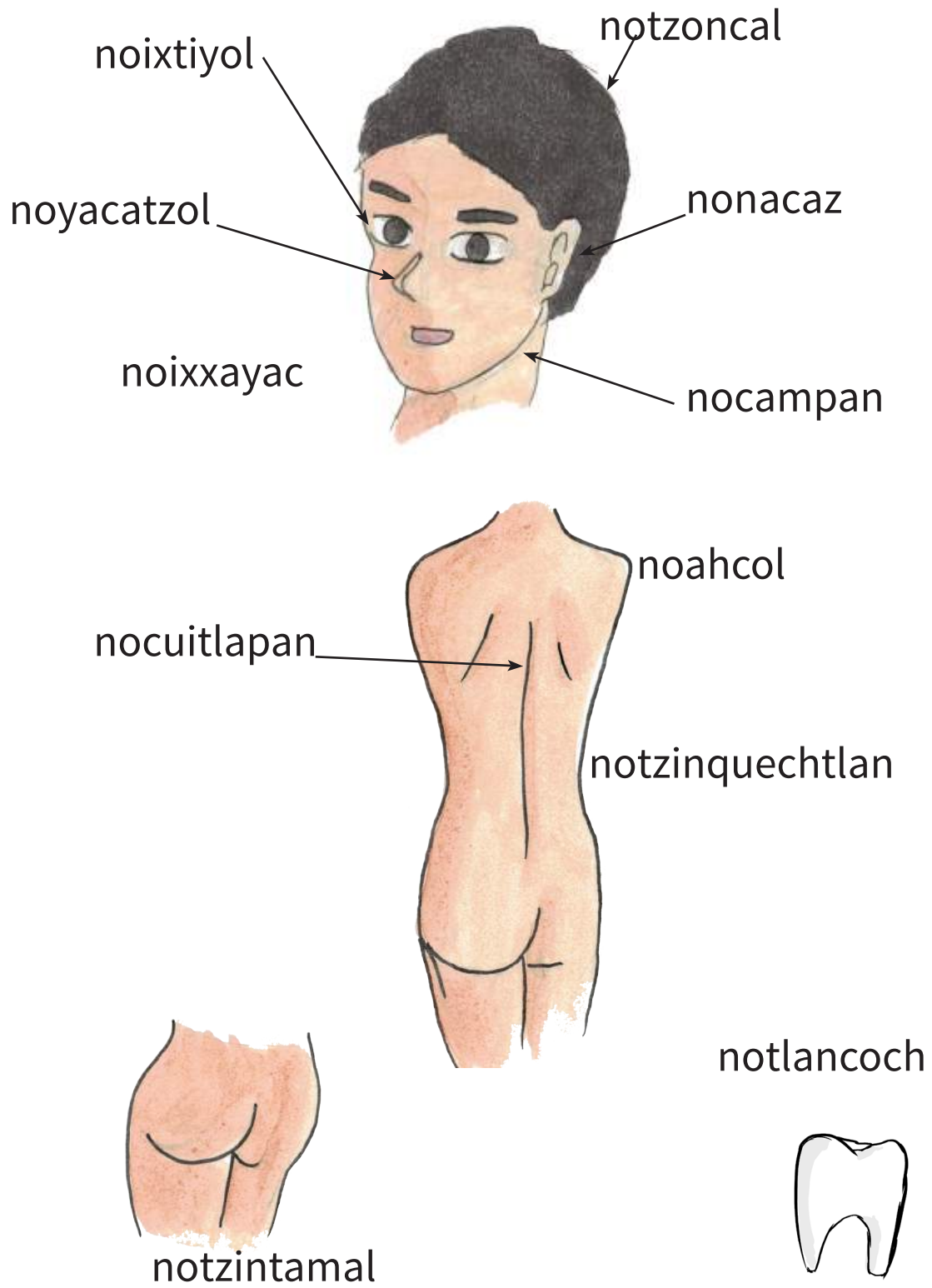
Toteixmatcahuan



Totlacayo



Totlacayo



Yoyomitl

noquechtlan



nocueh

cueitl



Yoyomitl



nocoton

nopantalon

Queniuhqui ticmachiliah toyollo

nicuecihui



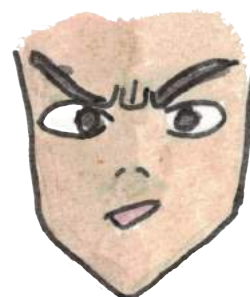
nimocuezoa



niyolpactoc



nicualantoc



Queniuhqui ticmachiliah toyollo

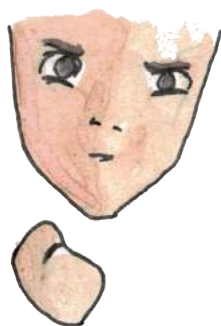
nimochoquilia



nitlaillamiqui



nitzitzimitic



nihuetzca



Cocoliztli

nimococoa



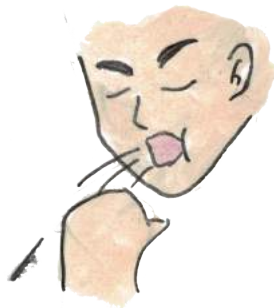
nitotoniya



nicohuixihui



nitlatlaci



nimihzotla

Cocoliztli

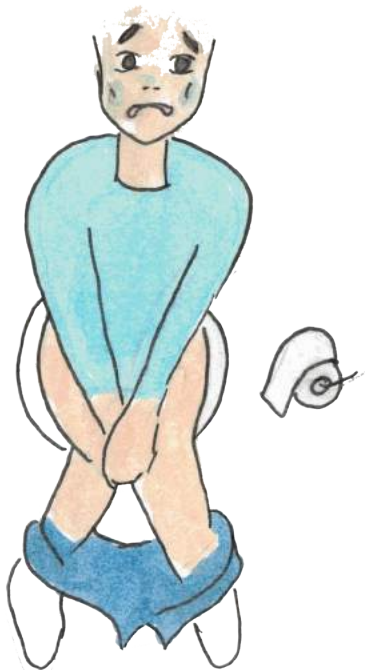
nicuaixpoyahui



atotomontzin



tlanquilli



nielmoyahui



Mahuiltliztli

tlen motemoah



tlen moitzquiah



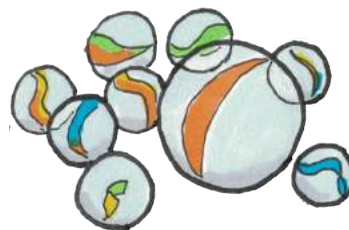
cuatrapich



trompoh



cayocoh

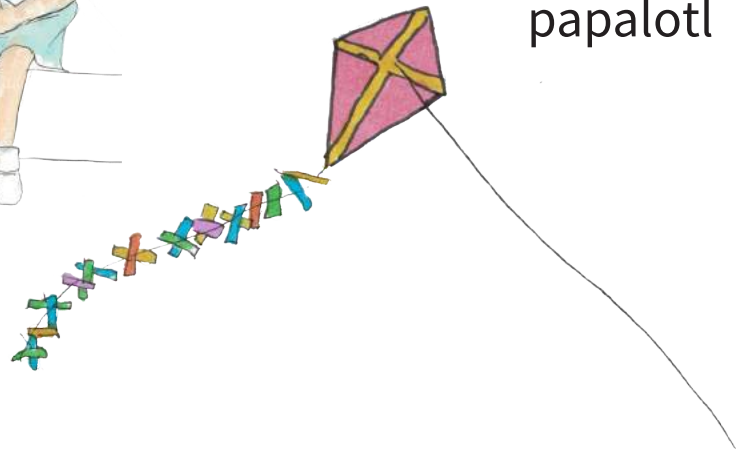


Mahuiltliztli

matatenah



papalotl



pilcaltzin



cuamoñecah



Ilhuicatl

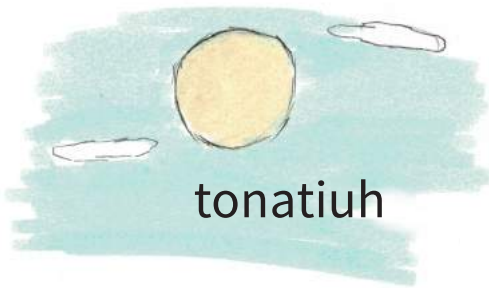


ilhuicatl

citlalin



metztli



tonatiuh



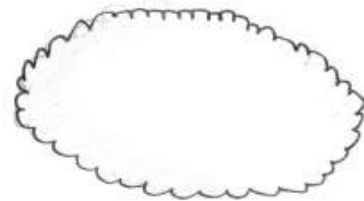
totiotzin



cahuitl



mixtli

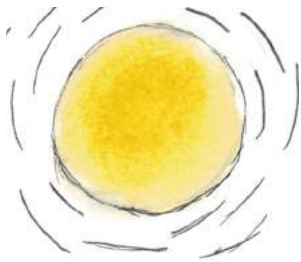


Ilhuicatl

cualo tonatiuh



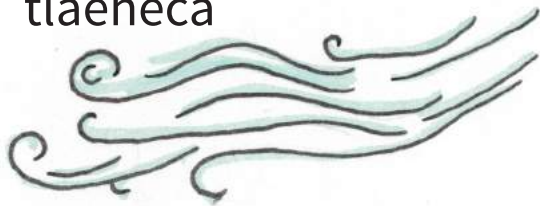
tlatotoniya



tlaceceya



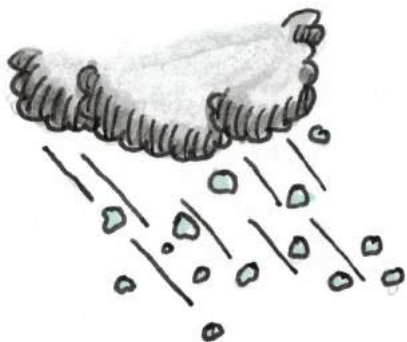
tlaeheca



xopanatl



tecihuitl



tlapitzauhcahuetzi



Tlapohualiztli

tlapohualiztli



chicomexochitl

ilhuitl



Tlapohualiztli



mecohtitlan



tepetl



tlamanaz

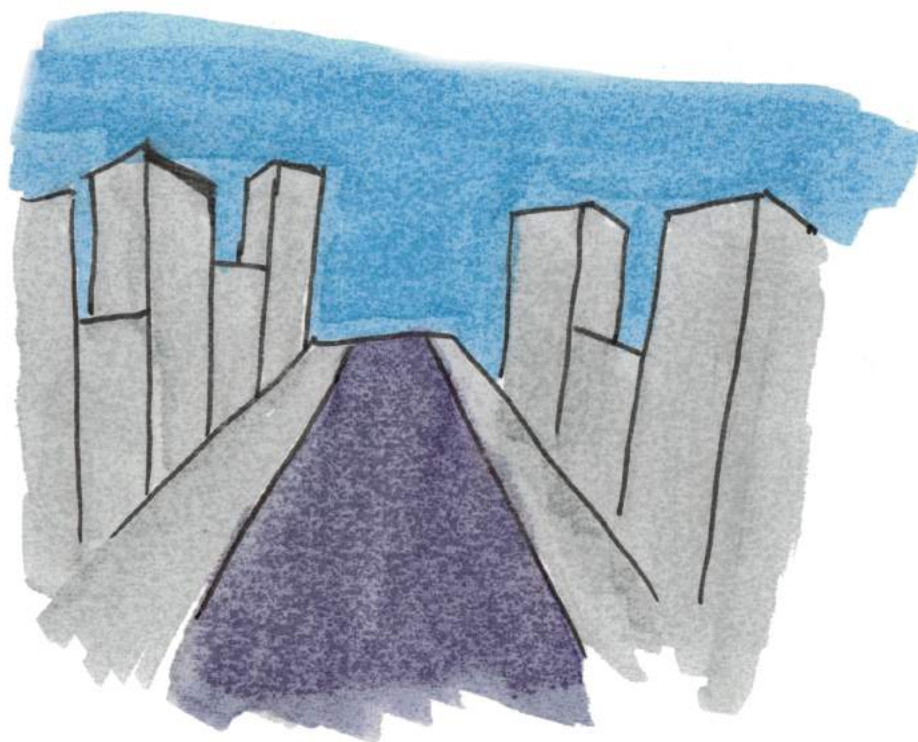
Campa timochantlaliah



chinanco/pilaltepetzin

Campa timochantlaliah

huei altepetl



Tequihuahmeh



tequihuah



hwei tequihuah



mocentiliztli

Tequihuahmeh

comontequitl



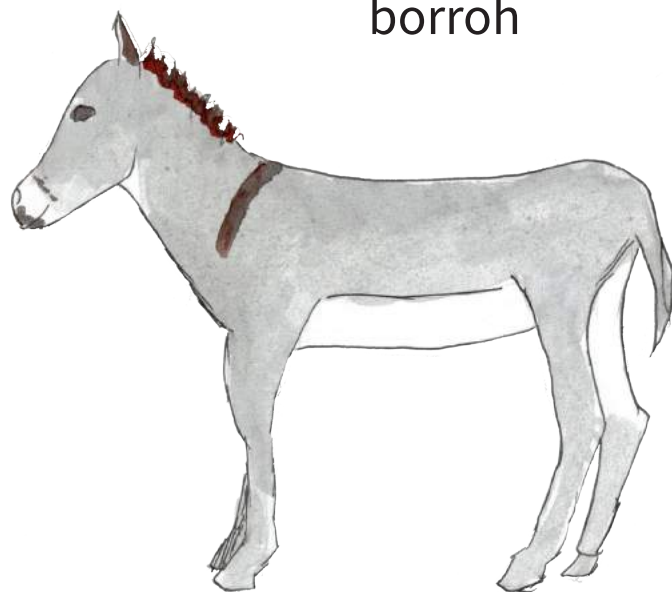
moquixtia tomin

topileh



Tlen techpatoltia canahya

borroh



cahuayoh

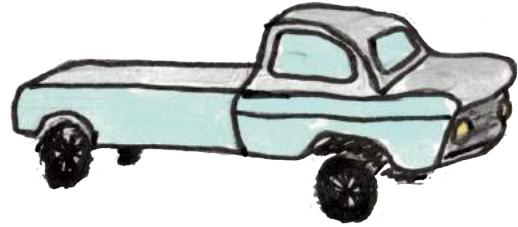


molah

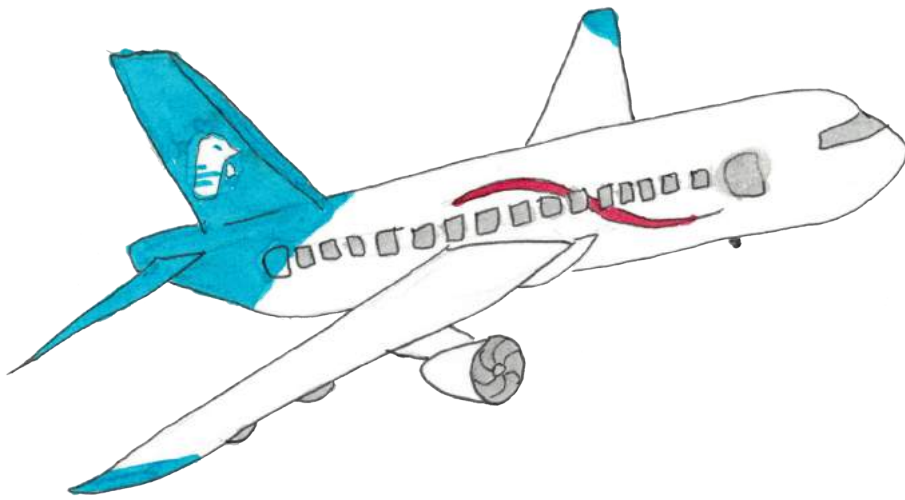


Tlen techpatoltia canahya

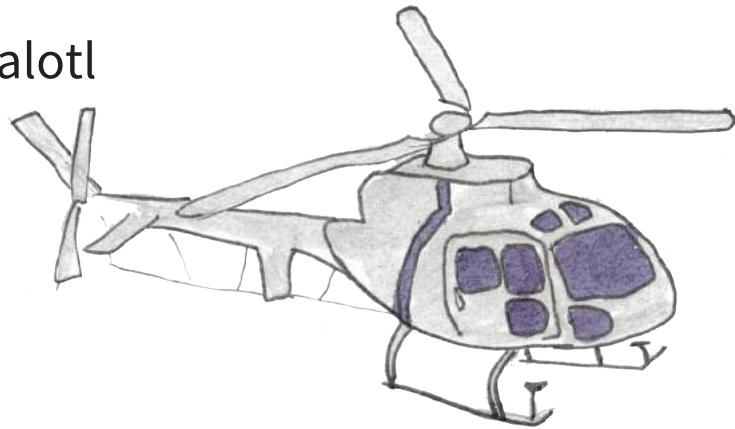
tepozcacalachtli



tepoztototl



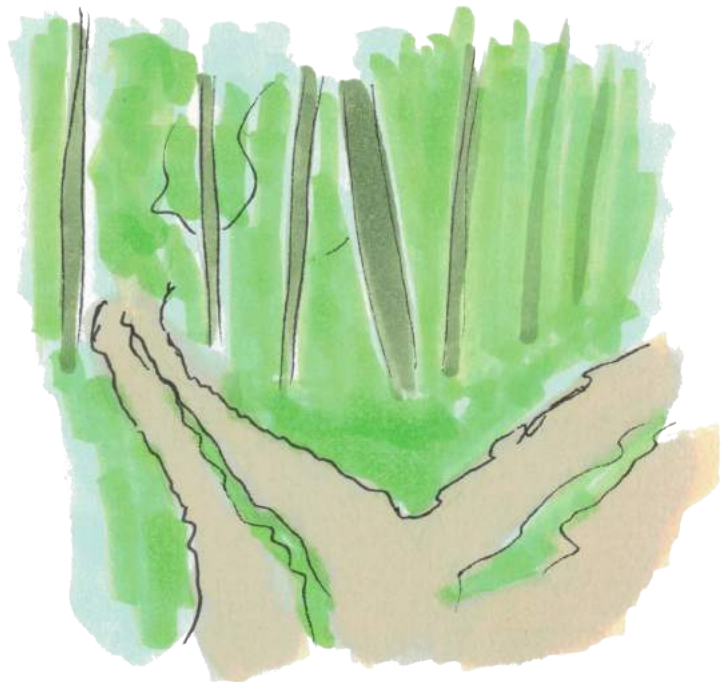
tepozpapalotl



Ohtli



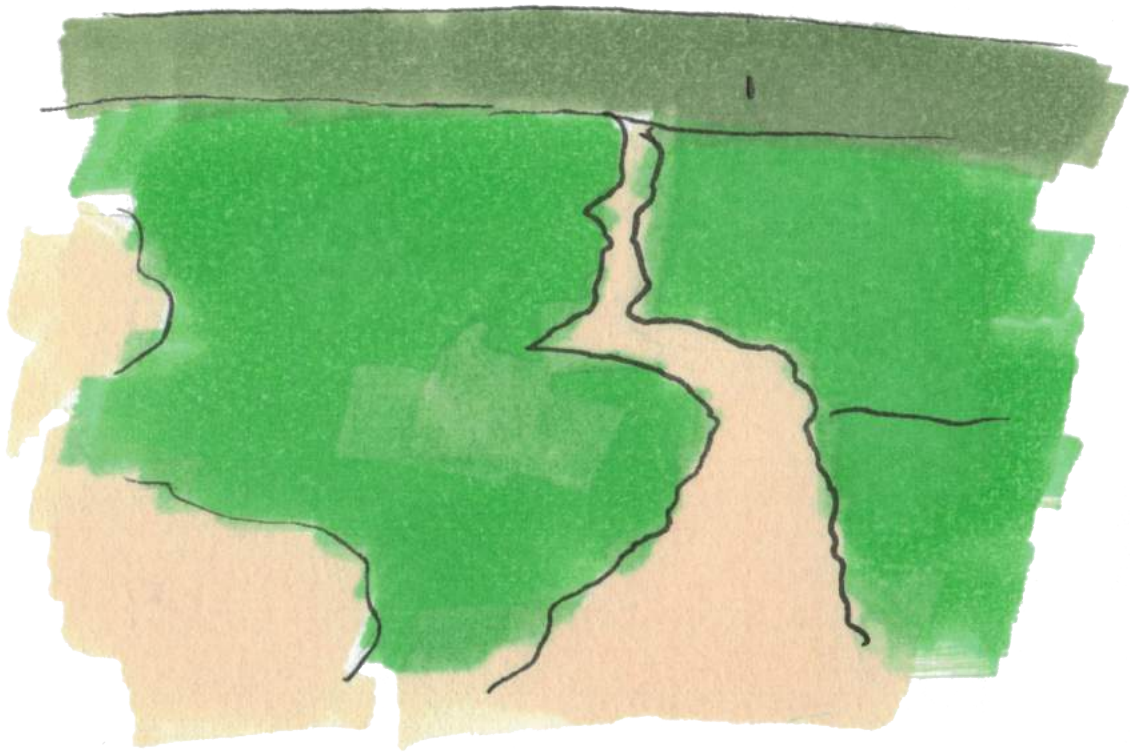
hueiohtli



ohmaxalli

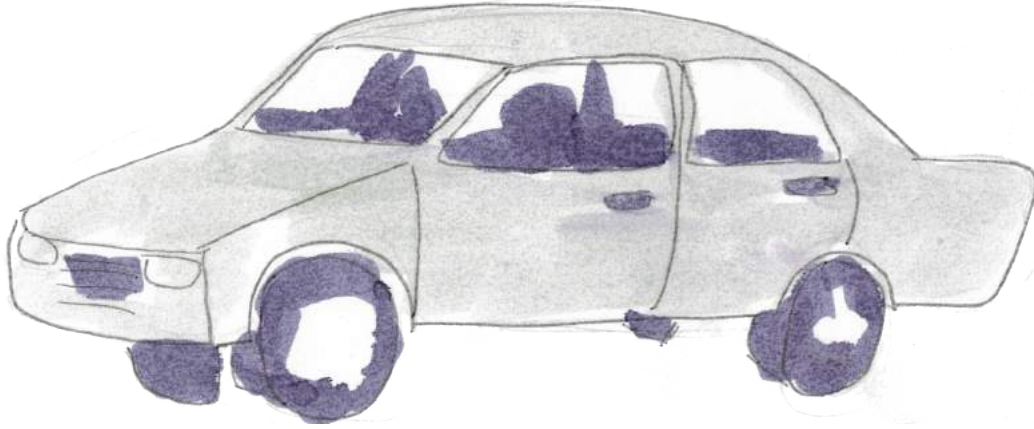
Ohtli

ohtli

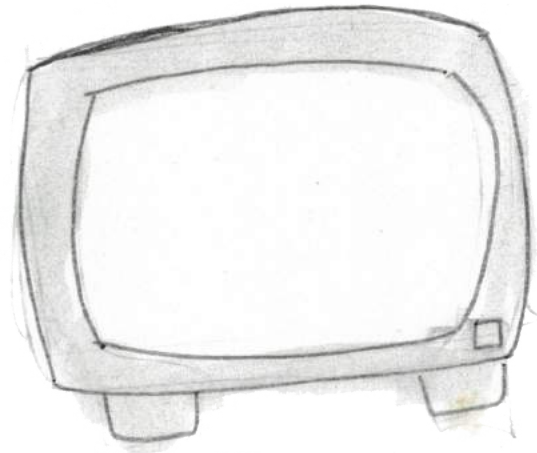


Yancuic tlahtolli

tepozcacalachtli



tepoztlamahuizolli



caltlamachtloyan

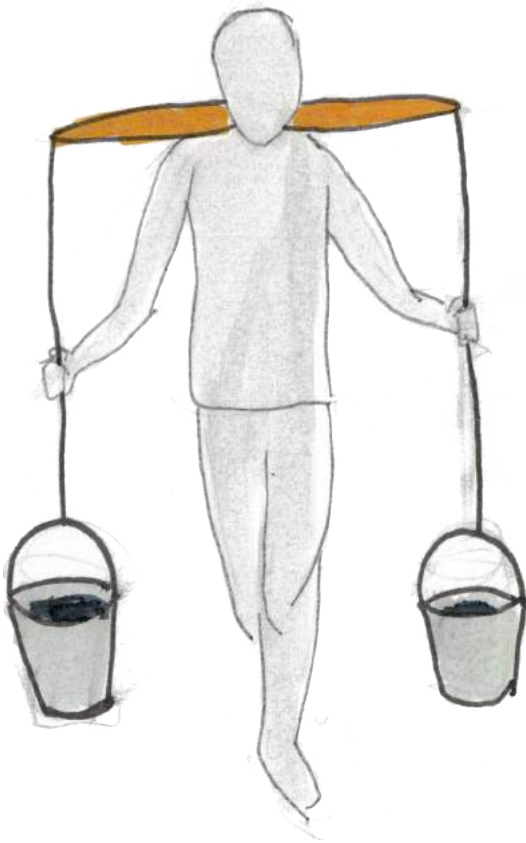


Yancuic tlahtolli



tzopelatl

cuaborroh

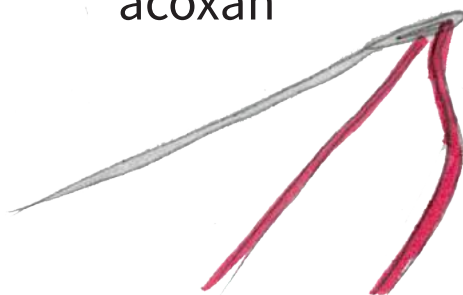


tentlazcayotl



Huahcatlahtolli

acoxah



cantil



coxtalli

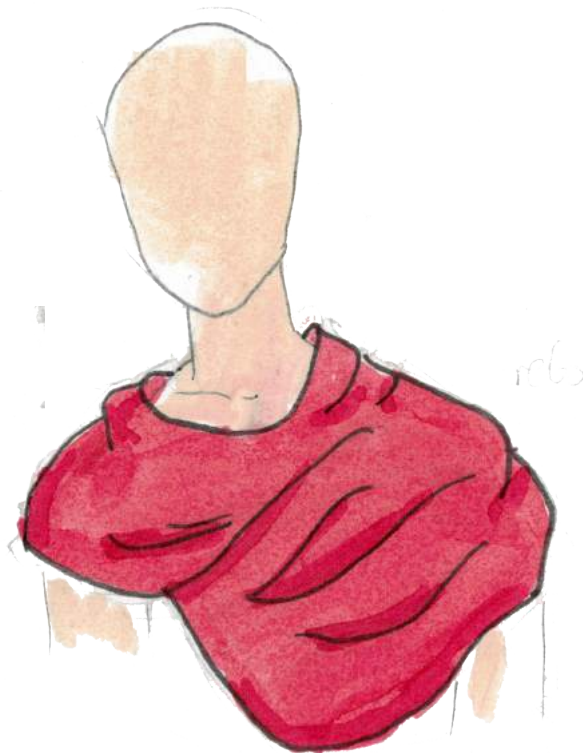


poteyah

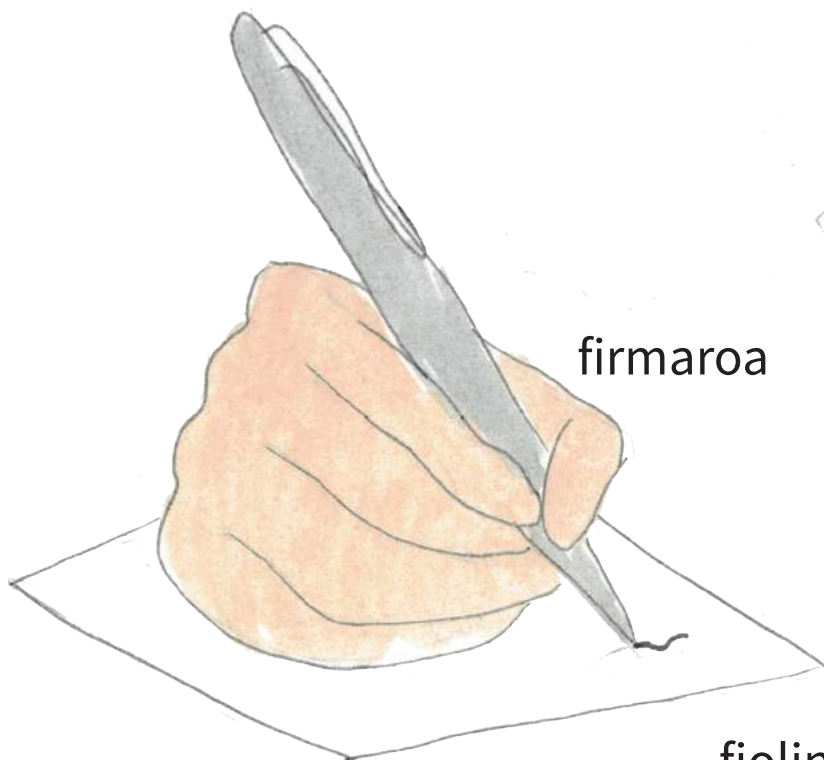


Huahcatlahtolli

rebozoh



firmaoa



fiolin





Pilpilmeh, xiquixmatican cequi
tlamantli tlen tonemiliz.



ISBN 978-83-63636-55-5

